

**WESTERN RAILWAY
RATLAM DIVISION**



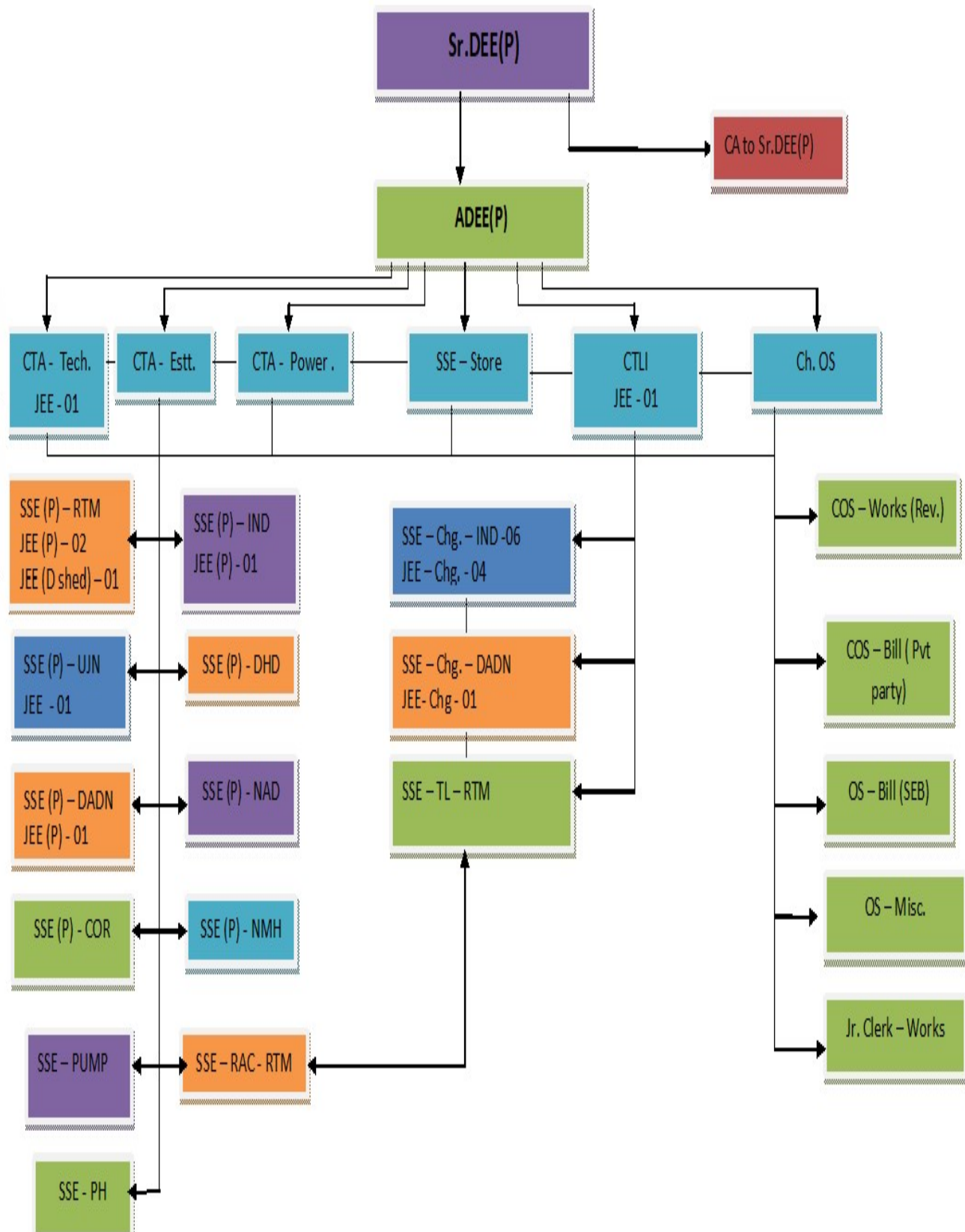
***ELECTRICAL
GENERAL SERVICES***



**Electrical (General Services)
Power & AC/TL**

(2020)

ORGANIZATION TREE – ELECTRICAL POWER (GS)



CADRE POSITION – RTM DIVISION

Unit	Sanctioned				On - Roll				Vacancy			
	Sup.	Skilled	Un Skilled	TOTAL	Sup.	Skilled	Un Skilled	TOTAL	Sup.	Skilled	Un Skilled	TOTAL
Power	20	165	95	280	17	154	40	211	3	11	55	69
TL/AC	17	198	142	357	14	176	123	313	3	22	19	44
Total	37	363	237	637	31	330	163	524	6	33	74	113

MAJOR ELECTRICAL ASSETS HOLDING – RTM DIVISION

Sr.	Assets	Holdings
1	Electrified Station	128 (Elect.)
2	No. of Track Crossing	411 (OH - 201 , UG - 210)
3	Escalators	10 Nos.
4	Lifts	15 Nos.
5	LC Gates (Active)	Manned-282 Nos. Electrified 224 Nos., Solar-47
6	HT Connections	19 Nos.
7	LT Connections	469 Nos.
8	No. of Sub-Stations	28 Nos.
9	Transformers	58 Nos.
10	DG Set 50 to 500 KVA	15 Nos.
11	Gen. Set (Portable)	139 Nos.
12	APFC Panel	08 Nos.
13	Pumps Set	342 Nos. Installed Total Pumps = 626 Nos.
14	UPS	167 Nos.
15	High Mast	35 Nos.
16	Solar Water Heater system	32 Nos.
17	Water Coolers	170 Nos.
18	Split AC Unit / Window AC Unit	628 / 114 Nos. Total Installed=742 Nos.
19	Refrigerators	44 Nos.

CLASSIFICATION OF IMPORTANT STATIONS OF RTM DIVISION

Class	No. of Station	Name of stations
NSG - 1	0	
NSG – 2	2	IND, UJN
NSG – 3	2	RTM, COR
NSG – 4	5	NAD, DHD, DWX, NMH, MDS

STAFF QUARTERS POSITION - RTM DIVISION

TYPE	TOTAL No. OF QUARTERS	No. OF QUARTERS ELECTRIFIED
I	4605	4605
II	2543	2543
III	289	289
IV	205	205
V	14	14
TOTAL	7656	7656

ENERGY CONSUMPTION ANALYSIS OF MAJOR LOAD CENTERS (HT – POINTS)

Sr.	HT Point	Contract Demand (KVA)	Consumption 2017-18	Avg Monthly consumption 2017-18	Consumption 2018-19	Avg Monthly consumption 2018-19	% Variation 2017-18 V/s.2018-19	Consumption 2019-20 till DEC-19	Avg Monthly consumption 2019-20	% Variation 2018-19 V/s.2019-20
1	RTM - I	900	4690240	390853	4034725	336227	-13.98%	2856670	317408	-5.60%
2	RTM - II	350	653000	54417	598570	49881	-8.34%	349032	38781	-22.25%
3	RTM - III	280	679293	56608	647946	53996	-4.61%	479568	53285	-1.32%
4	RTM - IV	200	374821	31235	352910	29409	-5.85%	284434	31604	7.46%
5	IND – I	400	1068057	89005	1104420	92035	3.40%	906240	100693	9.41%
6	IND – II	180	393859	32822	418705	34892	6.31%	301123	33458	-4.11%
7	LMNR	85	198924	16577	189513	15793	-4.73%	133418	14824	-6.13%
8	NAD-CL	150	490104	40842	475551	39629	-2.97%	400269	44474	12.23%
9	NAD-DL	140	480060	40005	418064	34839	-12.91%	335302	37256	6.94%
10	DADN	380	1255467	104622	896333	74694	-28.61%	731220	81247	8.77%
11	UJN	280	1130191	94183	852130	71011	-24.60%	803358	89262	25.70%
12	SMP	200	218475	18206	135967	15107	-17.02%	171848	19094	26.39%
13	COR-TL	100	384200	32017	413368	34447	7.59%	384714	42746	24.09%
14	COR-PH	102	453342	37779	393834	32820	-13.13%	163342	18149	-44.70%
15	GRF	60	110715	9226	111544	9295	0.75%	77836	8648	-6.96%
16	DADN Chg.	200	-	-	126709	10559	-	180477	20053	89.91%

SPECIFIC ENERGY CONSUMPTION

Year	Connected load (KW)		Average Energy Consumption (KWH) (Per month)		Specific energy consumption (KWH/KW) (Per Month)	
	Non Domestic	Over All	Non Domestic	Over All	Non Domestic	Over All
2017-18	14134	25221	821555	1796101	58.13	71.21
2018-19	14177	25260	739720	1573688	52.17	62.29
2019-20	15388	26133	819984	1499329	53.29	57.37

STATUS OF AIR CONDITIONING UNIT - RTM DIVISION

	Split	Window	Total
Departmental	628	114	742

PUMP POSITION OF RTM DIVISION

TOTAL HOLDING

Detail	Submersible	Open Well	Centrifugal	Total
Total No. of Pump in Division	412	215	04	631
Total No. of site in Division	203	141	04	347

Achievements Electrical General services

1. Projects for replacement of conventional lights by LED lights-

All LED conversion Projects for Railway stations, service buildings & Staff Quarters had been completed in target time.

Sr.	Project	Nos. of station/ Location/ Quarters	Status	Nos. of LED provided	Total assessed KWh saving per annum	Reduction in CO2 @ 0.850 Kg/KWh	Balance & action plan
1	Station	128	Completed	12686	1332247	1132410	completed
2	Service Buildings	655	Completed	16698	1000331	850281	completed
3	Railway Quarters	8843	Completed	49545	2270767	1930152	completed
TOTAL				78929	4603345	3912843	



2. Use of New and Renewable Energy Resources

In Ratlam division 2 Major projects for Roof top solar have been completed .

Sr	SPD	Capacity approved	Capacity installed till date	Net metering capacity till date	Balance net metering capacity	Remarks
1	Hero solar	1051	1051	1051	0	Completed 100%
2	Azure power	1635	1635	942	692	Commissioning Completed 100% Net metering in progress
Total		2686	2686	1993	692	

Status of Net metering (Azure Solar)

SPD	Total net meter connection	Total applied Net metering	No of sites yet not applied	Pending survey of DISCOM	Pending testing of net meters	pending signing of agreement	Pending Meter Installation	Completed
Hero	4	4	0	0	0	0	0	4
Azure	39	38	1	5	4	0	1	28
Total	43	42	1	5	4	0	1	32

Major installations

Sr.	Station	Capacity (KW)	Net Metering status
1	RTM	750	Completed
2	MHW	370	Completed
3	SMP	200	Completed
4	UJN	300	Completed
5	IND	270	Net metering in process
6	NAD	230	Net metering in process
7	COR	96	Completed



3. LIFT S & ESCALATORS –

In Ratlam Division till date 15 Nos. Lifts & 10 Nos. Escalators have been installed in target time.

Station	category	Lift			Escalator		
		Total Sanctioned	Installed till	Present status	Total Sanctioned	Installed till	Present status
Indore	A1 (NSG-2)	5	5	completed	6	6	Completed
Ujjain	A (NSG-2)	5	5	Completed	2	2	Completed
Ratlam	A (NSG-3)	3	3	Completed	2	2	Completed
Nagda	A (NSG- 4)	2	2	Completed			
Chittaurgarh	A (NSG- 3)	3	0	Lift planned with new under construction FOB, WIP			
		18	15		10	10	



4. Air conditioning of Running Rooms

Sr.	Running room	No. Of AC	status
1	RTM	79+14(VRF)	Completed
2	UJN	32	
3	IND	42	
4	COR	27	
5	DHD	5	
6	DADN	2	

5. Air conditioning of TTE Rest Rooms

Sr	Stn	Nos of AC	status
1	RTM	14	Completed
2	IND	8 (VRF)	
3	COR	1	
4	DHD	6	
5	DADN	2	
6	NAD	1	



Aesthetic lighting at newly developed “Railway Udyan”



Ratlam



Indore

Other Notable work done for staff welfare



Air conditioning of Holiday Home – UJN



Air conditioning of Male ward in Divisional Hospital –RTM



Lift at DRM office –RTM

RTM Division - Electricla Department Mobile Phone. Directory DRM Office (Elect) & Technical Staff (Elect)

Sr.	STN.	Designation	Section	Name	Auto Phone		CUG/Mobile No.
					Office	Res.	
1	RTM	Sr.DEE(P)RTM	Div. Office	Jasvidar Pal	44300	44301	9752492300 236144(O)
2	RTM	CA to Sr. DEE(P)	Div. Office	Javed Akhter	44300	--	--
3	RTM	Electrical Control	Div. Office	---	44320		9752492315
4	RTM	ADEE(P)	Div. Office	S.K.Nigam	44302	44303	9752492306
5	RTM	SSE-Tech	Div. Office	Vijendra Soni	44304	--	9752492324
6	RTM	SSE-T/P	Div. Office	Mastraj Meena	44304	--	9752492391
7	RTM	CTLI	Div. Office	Sunil Gehlot	44304	--	9752496459
8	RTM	SSE-Estimate	Div. Office	Hemant Borasi	44304	--	9752496454
9	RTM	SSE-Store	Div. Office	Subhash Singla	44304	--	9752496453
10	RTM	SSE (P) RTM	RTI to RNH & JAO to BNG	Nishikant Kunthwal	45590	--	9752492319
11	RTM	JEE(P)RTM		Gajendra Sharma	45590	--	9752492323
12	RTM	JEE(P) RTM		Vacant	45590	--	
13	RTM	SSE (TL) RTM	RTM	Vacant	45568	--	
14	RTM	SSE (RAC) RTM	RTM Div.	Iqbal Khan	45558	--	9752493931
15	RTM	SSE (Pump) RTM	RTM Div.	Sudhir Sharma	45567	--	9752492322
16	RTM	JEE(Pump) RTM	RTM Div.	Vacant	45567	--	
17	RTM	SSE (Ph.) RTM	RTM	Yogesh Korane	44310	--	9752492325
18	RTM	JEE(P) RTM	D/Shed	Vacant	42273	--	
19	NAD	SSE (P)NAD	KUH-Ex.NKI	Hari Ram Meena	84212	--	9001196483
20	DHD	SSE (P) DHD	KIZ-BMI	Vijay Mahawar	47464	--	9724096470
21	DADN	SSE (P)DADN	ANI - HKI-TIHI	Kafil Ahemad	83320	--	9752493941
22	DADN	JEE(P)DADN		Vacant	83320	--	
23	DADN	SSE(AC/TL)DADN	DADN Chg. Depot	Shelandra sirvaiya	83320		8462846221
24	DADN	JEE-AC/TL-DADN		Priyesh	83320	--	9752493975
25	IND	SSE(P) IND	RAU-GPX & IND-DWX	A.K.Nandy	49242	49243	9752496462
26	IND	SSE(P)IND		Hansraj Meena	49242	--	9752496464
27	IND	SSE(AC/TL)IND	IND Coaching Depot	Bhupendra Sinha	49240	49241	9752496461
28	IND	SSE(AC/TL)IND		Annand Singh	49240	--	9752496452
29	IND	SSE(AC/TL)IND		Vijay Malviya	49244	--	9752493934
30	IND	SSE(AC/TL)IND		Pankaj Namadev	49244	--	9752493947
31	IND	JEE(AC/TL)IND		Jay Singh Meena	49244	--	9752493946
32	IND	JEE(AC/TL)IND		Sandeep Jareda	49244	--	9752496455
33	IND	JEE(AC/TL)IND		Bhramanand Meena	49244	--	9575322531
34	IND	JEE(AC/TL)IND		Shyam Lal	49244		7999454735
35	IND	JEE(AC/TL)IND		Sundar Rajan	49240	--	9752493970
36	UJN	SSE(P)UJN	BQE-NRGR	Pankaj Sahu	41320	--	9752492385
37	UJN	JEE(P)UJN		Ganpat Singh	41322	--	9589822032
38	COR	SSE(P)COR	CAN-JWO	Gajendra Meena	48320	--	9752492390
39	NMH	SSE(P)NMH	MLG- DOD	Lokesh Meena	82320	--	9752492321

Sr.	Station	Designation	Name	Rly. (Office) Phone	Mobile No.
1	RTM	Chos	Milind karandhikar	44323	9752493927
2	RTM	OS	R.S.Meena	44323	9001192358
3	RTM	OS	Harendra Bharti	44323	9752592645
4	RTM	OS	Kalpana Dubey	44323	
5	RTM	Sr.CLK	Beena	44323	