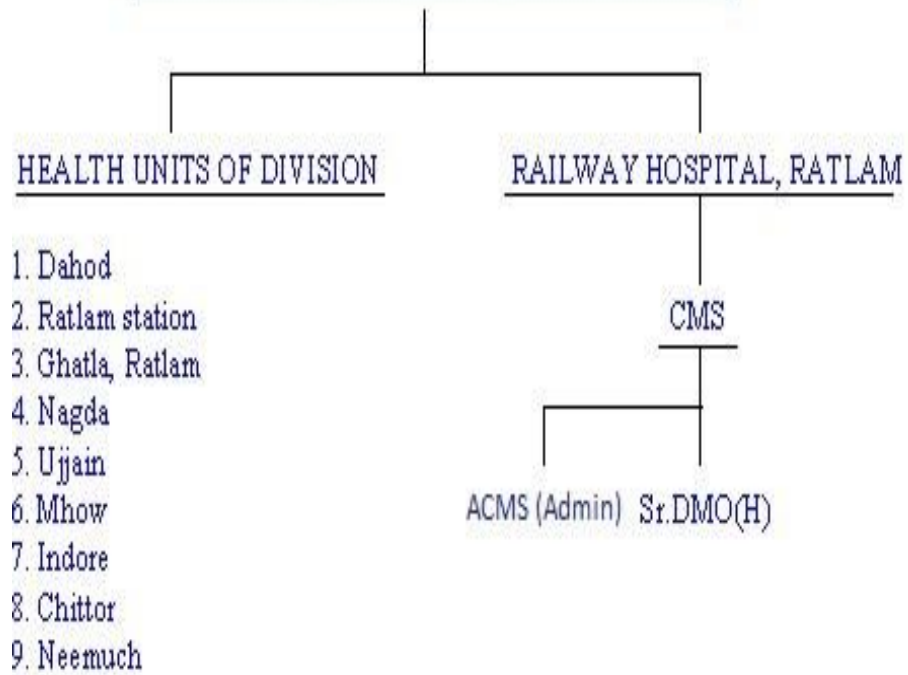


DIVISIONAL RAILWAY HOSPITAL



INTRODUCTION

On each *zonal railways*, the medical facilities are provided at its all divisional headquarter.

It renders:

- Medical treatment
- Medical examinations
- Preventive health measures
- Sanitation
- Railway accident relief
- Family welfare
- Occupational health services

Keeping this in view the stone for Railway hospital, Ratlam was laid in 1964. At the time of start the Hospital had 60 beds & under DMO in charge.

In 1980 the strength of beds was increased to 80 and under MS in charge. In 1988 the bed strength increased to 100 and under CMS in charge.

Now the Hospital supports the **bed strength of 125**, 14 **medical officers** [6 honorary consultants](#).

Ratlam Division serves the total population of 14472 employees and retired employees 11234 and their families (Total beneficiaries 106062) along the track both meter gauge and broad gauge through the base hospital Ratlam and the different health units.

The Hospital also offers services to Non-Railway patients.

MISSION STATEMENT

TOTAL
PATIENT SATISFACTION
THROUGH
HUMANE APPROACH
AND
SHARED COMMITMENT
OF
EVERY SINGLE
DOCTOR AND PARAMEDIC
TO PROVIDE
QUALITY HEALTH CARE
USING
MODERN AND COST EFFECTIVE
TECHNIQUES AND TECHNOLOGIES.

CASUALTY DEPARTMENT

Round the clock emergency services are provided in the Hospital with the same strength of staff. Doctors are kept on emergency day and night duties in rotation and are given due rest.

There is separate casualty department in the Hospital (Two beds) One Nursing sister & one dresser is also on duty along with all life saving arrangements . Two ambulances, fully equipped with life saving arrangements and staff are also available.

MEDICAL TREATMENT

"Treatment" means: the use of all medical and surgical facilities available at the Railway Hospital/Health unit or the consulting room of the Authorized Medical Officer and includes:

- (a) the employment of such pathological, bacteriological, radiological and other methods as are considered necessary by the Authorized medical Officer.
- (b) the supply of such medicines, vaccines, sera or other therapeutic substances etc., as are ordinary stocked in the hospital.
- (c) the supply of such medicines, vaccines, sera or other therapeutic substances etc., not ordinarily stocked, which the Authorized Medical Officer may certify in writing to be essential for the patient.
- (d) such accommodation as is ordinarily provided in the hospital suited to the status of the Railway employee concerned. If accommodation suited to its status is not available, accommodation of the higher class may be allotted provided it can be certified by the medical officer in charge of the Hospital.
- (e) such nursing as is ordinarily provided to the in-patients by the hospital.
- (f) the specialist consultation.
- (g) shifting the patient for treatment from residence to a hospital belonging to Railway or Government or a local authority, etc.
- (h) blood transfusion
- (i) Diet Charges as per IRMM

MEDICAL EXAMINATION

Medical Examination of Candidates for appointment to the Gazetted railway service.

1. The standards of physical fitness to be adopted should make due allowance for the age and length of service of the candidate concerned.
2. No person will be deemed qualified for the admission to the public service who shall not satisfy the Government in case he is not fit for that service.
3. The main objectives of medical examination is to secure continuous effective service.
4. Medical examination of candidates for appointment to the Gazetted railway service include:
 - a. general physical examination
 - b. vision test

The same medical examination are done for **candidates for appointment to the Gazetted railway service**

SANITATION

'**Sanitation** ' means maintaining a clean environment so that the beneficiaries stay in neat and hygienic environment. The modern scientific term is **Environmental Engineering** . Railway stations, colonies and all work places are to be maintained in a hygienic and clean manner and adequate care is to be taken at planning stage itself. Keeping this objective in view, special emphasis is laid on the collection and disposal of refuse, sewage and sullage in a scientific manner.

Sanitation services are provided in all the Railway premises including Railway colonies, stations yards, circulating area office coaches and the tracks. Cleanliness of these areas is a multidisciplinary approach by various Departments of Railways viz.. Medical, engineering, Mechanical, Commercial. The Medical Department maintains the sanitation at Railway colonies where Health inspectors are posted.

MEDICAL AID AT THE TIME OF ACCIDENT

GENERAL POLICY:

- The general policy in the case of Railway accidents in which casualties occur is that of rapid evacuation after rendering immediate and necessary first aid treatment. This is always preferable to prolonged detection and elaborate treatment at the site of accident as the time factor is of paramount importance in removing the injured persons to the nearest hospitals by the first available means of transport to enable all necessary medical aid to be rendered.
- It's therefore, essential that the Railway doctors know thoroughly their duties not only when called upon to render medical aid to the injured but also in connection with the preparations made by Railway administration to deal with accidents and the maintenance and use of accident relief medical equipment.

FAMILY WELFARE

The **Family Welfare** program on Indian Railways was started in 1965, as a national Program totally guided and financially assisted by the Ministry of Health for the welfare of railway population. From April 1994 railway is implementing this program without the support from Ministry of Health & FW.

The components of the program are:

- a. Prevention of unwanted birth and adoption of small family norm by all Railway employees.
- b. Maternal and child health care
- c. Immunization of eligible children against six preventable diseases i.e. Diphtheria, Tetanus, Whooping cough, Polio, Measles and tuberculosis under the universal immunization program.
- d. Immunization of pregnant women against Tetanus.
- e. Health education.
- f. Prevention against diseases like Diarrhea, etc.

Family welfare program is divided in 2 sections:

1. Family planning:

The **objective** of Family Planning component is stabilization of population by bringing down the birth rate.

As a prerequisite to proper planning randomized sample surveys to know the birth rates, proportion of eligible couples, contraceptive preferences should be done annually. Based on this data, innovative strategies have to be formulated locally.

2. Child survival and safe motherhood program:

The National Health policy has set the following goals under this program:

- a. Reduction in maternal Mortality to below 2 per 1000 livebirths.
- b. Reduction in infant mortality to less than 60 per 1000 livebirths.
- c. Reduction in child mortality to 10 or less per 1000.
- d. Reduction in proportion of low birth weight babies (less than 2500 gms) to 10% or less.

To achieve above the program aims at

- a. Immunization of all children and pregnant women against preventable diseases.
- b. Prophylaxis against anemia due to Iron deficiency and blindness due to deficiency of vit.A.
- c. Oral rehydration therapy.
- d. Intensified program for control of acute respiratory infections amongst children.
- e. Ensure safe deliveries.

OCCUPATIONAL HEALTH

Periodical medical examination of the employees is done for their protection. Workshop and workplaces are also visited and workmen are given proper health education about the risk involved in their occupation.

Simple rules for hygiene like hand wash, wearing clean clothes, use of protective devices like masks, Gloves, Barrier creams, eye protection devices etc. are also explained to them.

However if some employee is injured on duty, he is fully examined and treated and period of treatment considered as on duty.

Compensation in case of any loss of earning capacity is also given according to

the workmen compensation act 1923-1924.

DEPARTMENT OF PUBLIC HEALTH

These services are provided in the Division to keep control over communicable and non-communicable diseases. The main objective is to look after the health of the Railway staff and their families.

The services provided by the division are :-

- **Sanitation:** - It means maintaining a neat, clean and hygienic environment. This department looks after the maintenance of sanitation of Railway colonies. Seven Health&Malaria Inspectors are posted for the job.
- **Provision of Safe water supply:** - Provision of safe drinking water is the responsibility of engineering department; however medical department is responsible for monitoring the quality of drinking water.

Health Inspectors are assigned the job to check the presence of **Residual Chlorine** daily at various distribution/consumer end points and proper records are being maintained.

Bacteriological Analysis of water samples are being done monthly basis at major station and colonies&on alternative monthly basis at minor stations and their colonies.

- **Monitoring of Food hygiene under Quality Control:** -Food samples are being taken from food establishments in Railway premises for quality control
- **Anti-mosquito and anti-fly measures:** - Adequate measures are taken to prevent breeding of mosquitoes and flies. Regularly sprinkling of Larvicidalsand periodical and on demand / complaints spraying of insecticide in the quarters of residents in the railway colonies and in service building also.

HEALTH EDUCATION:-

Health Education known as 'Information, Education, Communication (IEC) is the most important tool for the improvement of Community health.

This program is carried out to help, motivate, and inform people to adopt and maintain healthy practices. Several activities are done to increase the awareness which includes:-

- Exhibitions by display of posters, charts in hospitals, health units, colonies, school, workshops etc.
- Lectures are delivered on health topics like non communicable diseases / lifestyle diseases and AIDS, Polio etc. in areas of Railway colony and training schools.
- Health check-up camp-is being organised regularly at Road side station, workplace.
- Multi-speciality health check-up camps is being organised at health unit.

DEPARTMENT OF FAMILY WELFARE

The objective of department is not only to look after Family Planning but also to look after the welfare of the Family. This includes -

- Maternal & Child Health care
- Care of pregnant women
- Immunization of pregnant women against diseases
- Vaccination of Children against six preventable diseases

Keeping in view of this the department has got efficient staff including CHI's, HI's, DEE (Divisional Extension Educator), Field workers and Clerks. The department is also carrying out several activities to look after the welfare of the families which includes :-

- Distribution of Oral pills, Condoms etc.
- Universal Immunization Program : The Expanded Program on Immunization (EPI) are done with the objective to reduce the morbidity and mortality due to Diphtheria, Pertussis, Tetanus, Tuberculosis, Polio and Typhoid by making vaccination services available to all the children and pregnant women.
- 2-3 Health check-up camps are arranged for Railway staff monthly.
- Medical Examination of school children studying in Railway school is carried out at the time of admission and once a year thereafter.
- Family Welfare Operations are done free of cost for both Railway And Non-Railway public.

Different DEPARTMENTS of RAILWAY HOSPITAL

- ④ Eye
- ④ Medicine
- ④ Gynecology
- ④ ENT
- ④ Orthopedic
- ④
- ④
- ④ Dental
- ④ Pathology
- ④ Pediatric
- ④ Dermatolog
- ④ Health
- ④ X-Ray

NETRADAAN - MAHADAAN

OPHTHALMOLOGY

Dr.M.K.Tatwade

Sr.DMO(EYE)

Timings:-

OPD - 9.00 a.m. to 1.00 p.m

OT Days - Wednesday and Friday

FACILITIES AVAILABLE IN EYE DEPARTMENT

On average approx. 40 cases are examined on each eye OPD day. Routine cases include chronic conjunctivitis, allergic conjunctivitis, chronic glaucoma, chronic DC, Pterigium, Foreign body cornea and Cataract.

Apart from these the routine ophthalmologic examination of employees of high grade medical categories including Fundus examination of Diabetic, Hypertensive cases etc. and special medical examinations are also carried out.

In OPD refraction with streak retinoscope, Direct and Indirect Ophthalmoscopy, Schiøtz Tonometry, Slit lamp examination, caritometry, Fields of vision, and small surgical procedures are performed.

On an average 179 eye operations are done in an year which include 135 Special operations and 10 ftajor operations, 23 Trivial operations, 11 ftinor Operations. All type of Anterior segment microscopic surgery is being performed like -

- Extra capsular cataract Extraction with Intra-Ocular Lens implantation with Phaco-emulcification and other methods.
- Chronic and acute Glaucoma are operated by TRABICULECTOftY, IRIDECTOftY, CYLO CYRO.
- Corneal Transplantation operations under fticroscope

MEDICINE

Dr. Avinash Chandra

Timings :- 9 am to 1 pm & 5 pm to

Sr. DMO(ftedicine)

The department's staff consists of 4 ftatron in charge (1 for ftale ward& 1 for Female ward,ICU ward,New ftedical ward), 9 Staff nurse(3 +3+3), 6 Aya bai(2+2+2), 4 Safaiwallas.

The department is having a male medical ward having 35 beds and a female medical ward having 12 beds. 4 beds from male medical ward are managed separately for critical cases with same staff. ftale medical ward is having 2 units, 1 main ward & other is annaxe.

Total admission in an year is around 4000. Bed occupancy varies from 40% to 110% in the peak season. Critical Care unit is having bed occupancy to the tune of 70%.

Around 60% of beds are occupied by retired employees.

TYPES OF ACCIDENT RELIEF MEDICAL EQUIPMENT

With a view to provide prompt medical aid, the following types of accident relief medical equipment are provided on the Railways.

- Scale I medical vehicles are stationed at Ratlam, Mhow, Ujjain, Neemuch.
- Scale II (DHD,NAD,SJP,NMH,MDS,IND,AGR &FTD) emergency equipment are kept in the boxes at specified station at every 80 to 100 kms.
- POMKA (Portable Medical Kit for Accidents) are provided in Hospital & all health units.
- Special First aid boxes have been provided on major stations like Ratlam, Indore, Ujjain, Neemuch and in two major long distance trains from Indore.
- First aid boxes have been provided in all stations, workshops, marshalling yards, loco sheds, guards and gang men.
- Computerized list of all the medical institutions and private practitioners etc. of the neighborhood bearing the names, addresses, and contact nos. of doctors have been provided to all the station masters for seeking help at the time of the accident.

GYNECOLOGY

MATERNITY & Child WARD

Dr. Ankita Maheta
DMO(Gynec.)

Timings :-9 am to 1pm & 5pm to 6.30 pm
OT Days :-ftoday & Thursday

The department's Maternity & Child Ward has the capacity of total 15 beds including 1 adjustable bed for post operative patients along with 5 cradles.

The staff consists of 1 Matron In charge, 1 Sister staff, 1 Ayabai and 1 sweeper.

- Total admissions in a year is about 900-1000.
- Average total deliveries in an year are about 100.
- Percentage of Non-Railway cases are 20%
- Percentage of Caesarean cases are 60%

FACILITIES AVAILABLE

Types of Operations

FACILITIES AVAILABLE

Ward is providing following facilities and Equipments :-

1. One labor room used for
 - Gynec checkups
 - Normal Delivery
 - Forceps Delivery
 - evacuation & Curettage
 - Catheterization
 - Cu-T insertion & removal
2. One Foetal Doppler to know the foetal heart rate of F.H.S.(Foetal heart sound).
3. One N.S.T.(Non Stress Test) machine costing about 3.5 lakhs used to know the foetal well being in uterus.
4. One USG Machine

5. One Intensive Neonatal Care Unit containing one Incubator to keep low birth weight and serious patients for photo therapy and one warmer to keep baby warm & prevent them from Hypothermia(decrease in body temperature)
6. Weighing machine
7. Two oxygen cylinder
8. Neonatal resuscitation equipments
9. One trolley
10. One wheel chair

TYPES OF OPERATIONS

Different types of operations being done-

- Total abdominal Hysterectomy
- Caesarean section
- Dilation & Curettage
- Cervical biopsy
- Cauterization
- Medical termination of Pregnancy (MTP)
- Mc Donald stitch application
- Laproscopic Tubectomy (LTT)
- Abdominal Tubectomy (ATT)
- Vaginal hysterectomy

DEPARTMENT OF SURGERY AND ORTHOPEDICS

DR.A.K.MALVIYA
CMS(ortho.)

Timings :- 9 AM to 1 pm
5 pm to 6.30 pm
OT Days: wed &
Fri

The department has got routine surgical instruments, well equipped OT's for major and minor operations, Boyles apparatus, Pulse oxymeter, shadow less lamps mobile C arm image intensifier.

On average 70-80 patients are examined in OPD daily. Along with approx. 700 operations yearly which include around 30 Special operations, 120 major operation and 200 minor operation and rest Trivial operations.

Tertiary care surgery like Total hip replacement, Total knee replacement & revision Arthroplasty are being done regularly in divisional hospital. More than 200 cases done till date. All sorts of trauma surgeries are done at Divisional Hospital.

All routine and emergency operations including Prostate, Thyroid, Breast Cancers, abdominal operations like Hernia, appendicitis, Kidney stone removal, Biopsy, urinary bladder etc. are also performed.

The department also includes 2 dressing rooms (outdoor & indoor). App. 1000 patients are examined daily in outdoor dressing room.

DEPARTMENT OF PHYSIOTHERAPY

Shri Hanuman Meena,
Physiotherapist

Physiotherapy is one of the essential assisting services specially for paralyzed cases & orthopedically handicapped.

This department provides alternative system of pain relief like wax bath, infrared lamp, short wave Diathermy, Ultrasonic massage etc.

It also have equipments like Static cycle exerciser, Parallel rod walker, Roving exerciser, Computerized services and lumber traction system.

Dermatology

Dr V V Nag Rajneesh Mavuri
1PM

TIMing 9am to

ADMO,MBBS, DDVL

AND 5PM TO 6.30PM

Dept of Dermatology in DRH Ratlam is a OPD based department with most of the patients were treated in OPD basis in regular OPD timings. If any patient requires admission will be admitted under concerned wards depending on their primary disease.

Will attend patients in different wards for any dermatological opinion and treatment.

Along with OPD we conduct regular dermatological camp in diseal shed Ratlam and DADN depending on the requirement of the staff.

We are treating different types dermatological problems which cover irritant dermatitis (Diseal dermatitis) chronic disorders like psoriasis , Lichen planus, Atopic dermatitis.

Also deal with venerology and primary diagnosis of leprosy patients.

Providing expert opinion in dermatology whenever required to HQ in form of medical board.

Health & family welfare

Dr Deepak Saklecha
ADMO, MBBS, MD-PSM

TIMing 9am to 1PM
AND 5PM TO 6.30PM

The department consists of 01 Asst. Health Officer, 10 CHI/HI 01 and Food Safety Officer along with 19 Antimalarial Khalasi, 96 Safaiwalas and 01 Chowkidaar. The department carries out the following activities:

Maintaining general cleanliness of railway colonies.

Supervising general Cleanliness and garbage disposal by Nagar Nigam/Private agencies in major Railway colonies.

Antimalaria activities and Preventive measures.

Testing of Potability of water which includes testing of chemical and bacteriological quality of drinking water.

Monitoring of Food establishment and quality control of food.

Communicable disease surveillance.

Health Education.

In the 2019-2020 up to February, total 31,689 and 1903 water samples were checked for residual chlorine and Bacteriological testing respectively. 272 food samples were checked under quality control while 237 food samples were collected under FSSAI.

DENTAL DEPARTMENT

Dr.Jayas Sakla

Days :- Monday to Saturday

Timing : 9am to 1 pm

Each person is having 32 teeth and it is likely that once in a lifetime each individual will suffer from dental problem.

Thus the hospital is having a dental surgeon who comes from Dahod Divisional Hospital.

He is having Dental Chair, Dental X-Ray facility. Also acquainted with the facilities for filing, scaling and cleaning of the tooth.

PATHOLOGY DEPARTMENT

LABORATORY

The staff consists of 1 Lab. Superintendent, 1 Asst. Chemist, 1 Lab Attendant, 1 Safai Walla.

INVESTIGATION :-

1. Hematology :- Hb, TLC, DLC, ESR, BT, CT, PT, Complete Haemogram group RH and MP.
2. Serology :- Widal, VDRL, RA, HIV, ASO.
3. Clinical Pathology :- Urine, stool, Sputum.
4. Bactenology
5. Bio- Chemistry :- Sugar, Urea, Cholestrol, Creatinin, Bilumbin, SGOT, SGPT, Alkaline Phosphorus, Hbs Ag, Amylase, Calcium.
6. Other's :-HIV & VDRL (On Tuesdays)

Lipid Profile (Daily)

DIFFERENT EQUIPMENTS USED :-

- Semi Auto Analyzer
- Binocular/Microscope
- Glucometer
- Spectro Photometer
- Incubator
- Oven

PEDIATRIC

Dr. Nimisha Joshi
ADMO(M.D. Paed.)

Different services are provided to Pediatric population of Ratlam Division.

Out patient Department:-

- Specialist pediatric OPD is available for children less than 14 years of age.
- Clinical services are provided to children under 5 years of age.
- Special immunization programs are carried out including active involvement in pulse polio campaign and surveillance of AFP.

Indoor care Facilities :-

- The department consists of 10 bedded ward including 1 bed in cabin for serious case. Patients suffering from major ailments are kept here.

Management of patients suffering with Bronchopneumonia, AGE, PEM, Acute Meningitis (Pyogenic & Tubercular), Convulsive disorder, Nephrotic Syndrome etc.

- **Neonatology** :- This department keeping in view the 'Neonatology' i.e. science of child care of less than 28 days is well equipped with instruments like -
 - Incubator (Servo control)
 - Radiant Warmer
 - Neonatal Resuscitator with Pulse Oximeter
 - Photo therapy unit.

This section is successfully managing

1. L.B.W (Low Birth Weight) infants (Premature & IUGR babies)
2. Birth Asphyxia
3. Neonatal Jaundice(Physiological & Pathological)
4. Resuscitation of new born.

The Rights of A child :- UN Declaration of rights of child-UNICEF

THE RIGHTS OF A CHILD



Every child has the right

- to affection, love and understanding
- to adequate nutrition and medical care
 - to a name and nationality
 - to special care if handicapped
- to be among the first to receive relief in times of disaster
- to learn to be a useful member of society and to develop individual abilities
 - to be brought up in a spirit of peace & universal brotherhood
- to enjoy these rights regardless of race, color, caste, sex, religion, national or social origin.

UN Declaration of the rights of child

UNICEF

RADIOLOGY

It is one of the assuring unit of the hospital which assists in rapid diagnosis by radiation.

This department is having one 300 mA X-Ray unit with facility for screening, Barium studies etc.

The department is also having one portable 100 mA unit which can be operated in any ward ICU, OT, Special cabins etc.

For the last five years radiology department is also having one SONOGRAPHY ftachine with Gyne probe, Cardiac probe and sector probe.

During hospital hours this department remains open and staff is being put on emergency call duties in holidays and outside hospital hours.

OTHER FACILITIES

There are many facilities provided by Railway hospital, Ratlam.

1. Attendance and Treatment to outsiders.
2. Medical aid at the time of Railway Accidents.
3. Aurvedic
4. Homeopathy
5. Air condition Mortuary
6. Rehen - Basera

NON RAILWAY PATIENTS

Free Medical attendance and Treatment facilities are not admissible to outsiders.

When spare accommodation is available after meeting the need of Railways beneficiaries, the Railway administration may provide up to a maximum of 10 % of beds in a Railway hospital to outsiders.

Different charges have been laid down for different types of accommodation. These charges are inclusive of accommodation, ordinary medicines and professional services but charges for X-Ray examination, pathological, bacteriological and analytical tests etc. are separate.

MEDICAL AID AT THE TIME OF RAILWAY ACCIDENTS

As soon as there's any accident within the division or nearby immediate telephone messages are delivered and hooters are sounded and doctors are to reach the accident relief medical van within 10 minutes of the hooters.

One doctor on duty come along with POftKA (Portable fmedical Kit for accidents), nurse, attendant and a dresser.

The in charge of fmedical Institution will also move immediately and the doctor 2nd in command takes the charge of hospital.

Medical Equipments

ORGANIZATION At Site

TYPES OF ACCIDENT RELIEF MEDICAL EQUIPMENT

With a view to provide prompt medical aid, the following types of accident relief medical equipment are provided on the Railways.

- Scale I medical vehicles are stationed at Ratlam, Mhow, Ujjain, Neemuch.
- Scale II emergency equipment are dumped in the boxes at specified station at every 80 to 100 kms.
- POMKA (Portable Medical Kit for Accidents) are provided in Hospital & all health units.
- Special First aid boxes have been provided on major stations like Ratlam, Indore, Ujjain, Neemuch and in two major long distance trains from Indore.
- First aid boxes have been provided in all stations, workshops, marshalling yards, loco sheds, guards and gang men.
- Computerized list of all the medical institutions and private practitioners etc. of the neighborhood bearing the names, addresses, and contact nos. of doctors have been provided to all the station masters for seeking help at the time of the accident.

AURVED

Dr.R.H.Upadhyaya

Aurvedic Chikitsa Pranali (Unani Medical Treatment) is the oldest mode of treatment being followed in our country since centuries.

Many people has got faith in this mode of treatment.Keeping in view of this Railway through its *Welfare Department* has provided this facility at Divisional hospital, Ratlam.

Railway Hospital ratlam appoints part time qualified *Aurved Acharya* on monthly contract basis.and also provide free medicines.

Approximately 600 to 700 patients are seeking this facility monthly.

HOMEOPATHY

Dr. Afzal Mansori
DHMS

Timings :- 9am to 1 pm

Alternative medicine :-

Homeopathy is a medical therapy based on *symptomatology*.

'SIMILIA TREATS THE SIMILAR'

This hospital is an Allopathic hospital. But now-a-days people are having more inclination towards Alternative system of medicine due to the fear of drug reaction in allopathy.

Looking to this feeling of patients facilities of Homeopathic consultation is being provided through Staff Welfare Funds.

It is also observed that this code of treatment has treated many such diseases like Rheumatoid arthritis, Chronic skin diseases, asthma, and various other chronic diseases which allopathy failed to treat.

MORTUARY:-

This is the important part of each hospital especially in setups. There are patients from periphery and sometimes patients come alone and on the death of the patient hospital is forced to keep the dead bodies awaiting their collection by relatives.

Currently the hospital has one room for mortuary and also planning to have 2 bedded mortuary in which bodies can be kept without ice. such machinery is Electrically operated and deep frozen.

REHEN BASERA

Every patient who's hospitalized have at least one attendant to look after him. This attendant is not allowed to stay at night near the patient.

To give comfort to them is also taken care of so one portion of the building is provided for attendant as **REHEN BASERA.**

NEW ADDITIONS IN HOSPITAL

ICU :-

Our's is a 125 bedded hospital. 4 to 5% of beds should be provided for critical care where round the clock trained and alert staff with up to date equipments should be available.

Keeping in view of this the Hospital is planning bedded ICU. 4 beds will be connected with cardiac monitor and 2 beds will be for burn and severely infected cases.

Thus ICU will be fully air-conditioned and will have central suction, central Oxygen supply, adequate floor area as per yards stick(14 sq.meters per bed), good illumination.

One nursing station will be there where doctor and paramedical staff will be available. Patients will be received by trained staff and immediate life support system will be connected.

Round the clock monitoring with the electronic gadgets will help in detecting any abnormality at earliest so that the precious human life can be preserved.

Outside this ICU will be attendant lobby where attendants can pass there time without creating mess in ICU.

GENERAL WORKING OF THE HOSPITAL

Hospital waste management : Our hospital is having 3 types of waste management - **(a)** Liquid , **(b)** Solid , **(c)**Kitchen Garbage.

Harmful Liquids are disposed off in safe way in the flush.

Liquid Waste from X-Ray Department is optioned for Silver Extraction.

Solid waste is further of 3 types :

- Non-Hazardous & Non-Infectious
- Hazardous & Infectious
- Hazardous & Non-Infectious

Hazardous & Infectious waste includes dressing material contaminated with body fluids & blood, body parts disposable contaminated with body fluids. They are disinfected & disposed off by burning in incineration and then land filled.

Hazardous & Non- Infectious waste includes sharp pieces of glasses, expiry date medicines. They are disposed off by land-fills.

Non-Hazardous & Non- Infectious waste includes Stationary waste, Kitchen garbage. Stationary waste is handed over to **Municipal Corporation** duly served in black colored polyethenes. Kitchen garbage is subjected to **worm culture** for converting into compost.


Hospital Infection Control:- This activity is looked after by Hospital control team including Physicians, Surgeon, Infection Control sister. Regular air samples from prime locations like OT, Surgery wards, ICU are taken for culture sensitivity. Sensitivity data from lab. are studied.

Hospital has it's own antibiotic policy, regular staff trainee for asepsis sterilization and disinfections is done.

Time to time supervision is provided by the trained staff.

In - House Staff Training :- Medicine is fastly advancing subject so regular In-House teaching program are run. Hospital is training Group A, Group C, Group D staff.

- **Group A** includes doctors. They are **weekly clinical meetings** & each doctor is deputed to attend one conference pertaining to his facility once in a year on Railway's cost.
- **Group C** includes HI's, nurses, Pharmacists. They have their own training once in 5 years. They are deputed to Zonal Training School, Udaipur. Time to time they are trained in hospitals for new subjects like HIV & AIDS
- Group D staff includes HA's and Safai wallas. They are also imp member of health team. They are trained by Hospital Staff in the same hospital.

 This hospital is having **one Conference room equipped with 2 Overhead Projectors, 1 Slide Projector(35 mA) and a PA(Public Address) System.**

 Also having **1 library having around 2000 books of various facilities and periodicals.**

Power Supply :- Our Hospital is having 3 types of power supply -

1. Through usual distribution line.
2. Through separate line from power house of Railway.
3. Through batteries with automatic switch-over.

Special Areas of Hospital like OT, Casualty, Laboratory, are connected to **generator.**

Alternative power is used in the form of **Solar Water Heaters.**

Food and Water Supply :- Round the clock water supply is maintained in all the departments. We are having one big over-head tank with a separate feeder pipeline. when the tank is empty it is refilled. Hot water supply is provided in all the bathrooms through one solar cum electric water heater.



This Hospital is having one Kitchen staffed with 2 cooks, 3 helpers. On average 60 to 80 meals are served in a day to the patients.

Only vegetarian diet is provided along with liquid diet, light diet and full diet. It is provided on the bed of the patient.

Drinking WATER :- Now most of the literate population are accustomed about safe drinking water. Hence our hospital provides water coolers fitted with Aqua guards.

Patient Amenities :-

Hospital is a place where one passes his part of life when he is in distress. If they are deprived of various amenities for which they are accustomed at home it becomes very difficult to pass their time. hence Hospital authorities provide such amenities to the patient. three wards were provided with fticrowave oven by WRWSSC

Tele-Vision :- It is an important amenity which keeps attention of patient diverted. IT also helps them well informed about the outside world. So Tele- visions are provided in wards for entertainment.

V.C.R.'s are also there which are used to educate patients regarding their health.

Radio/ftusic system :- ftusic is said to be a best healer, so by providing a soothing music hospital provide entertainment as well as fast recovery to the patients.

News-Papers and Periodicals :- These are important source of entertainment. The beauty of this is that they are available whenever patient is in mood to read.

Garden :- Garden is an out door amenity . During the period of recovery the natural scene of good garden with seasonal flowers helps in fast recovery.

Certain indoor games like Ludo, Snakes & Ladders, certain toys like Bicycles etc. are important amenity for children.

Communication :- Hospital is equipped with Railway as well as P& T telephones at various locations. Public booths are also there for the patients to use.

These amenities are provided in OPD blocks where lot of time patients and their relatives passes in queue. These help bringing down the anger reaction which is the outcome of long waiting.

