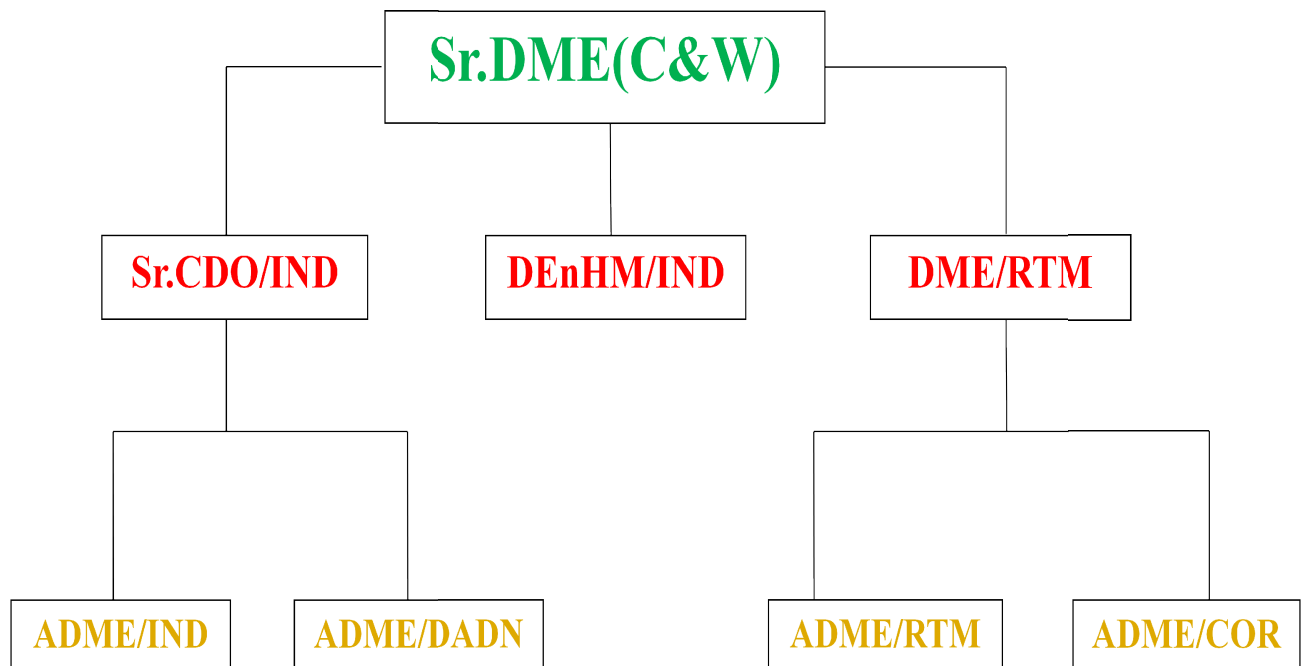


ABOUT RATLAM DIVISION

- **Mechanical activity centers on RTM Division.**
- **Organization**
- **Sanctioned staff strength.**
- **Coaching Activity:**
 - **Coaching Depot-IND (BG)**
 - **Coaching Depot-DADN (BG & MG)**
- **Wagon Activity:**
 - **Wagon Depot Down Yard-RTM**
 - **Wagon Depot-SMP**
- **Other C&W Units:**
 - **C&W Unit-Pass. Yard, RTM**
 - **C&W Unit-COR**
 - **C&W Unit-UJN**
 - **C&W Unit-DHD**
- **C&W Training Centre-UJN**
- **Accident Relief Equipment & Medical Van: RTMUJNCOR
DADN**
- **Weigh Bridges**
- **Crew Lobby-COR**
- **Running Room-COR**
- **Railway Consumer Depot(RCD)
RTM, UJN, COR, DADN**

2. ORGANIZATION:

Mechanical Department is headed by Sr. DME/RTM with assistance of Sr. Coaching Depot Officer-IND, Two Sr. Scale Officers and four junior scale officers.



3. SANCTIONED STAFF STRENGTH:-

Carriage & Wagon					
	Group "C"			Group "D"	Total
	SUPERVISORS	OTHER THAN SUP.	TOTAL		
Sanction	155	539	694	515	1209
On Roll	97	440	537	390	927
Vac.	58	99	157	125	282

4. COACHING ACTIVITY

On RTM Division coaching depot IND and coaching depot DADN are engaged in maintenance of BG trains & MG trains are maintained at coaching DADN. Also mechanical department on RTM division is nodal agency for maintenance of fire extinguisher.

- Coaching Depot, IND (BG)
- COACH CARE COMPLEX, DADN(BG&MG)

A) Coaching Depot INDORE (BG)

i) Activities:-

Coaching depot IND was commissioned in Feb-1995. Since then, there has been periodical enhancement in activities and coach holding. At present the depot has coach holding of 480 (379 ICF + 101 LHB) coaches and sanctioned cadre of 378 (366 Technical and 12 Clerical staff) posts in Mechanical(C&W Department) .

a) The depot undertakes:

- Primary maintenance of 20 trains.
- Secondary maintenance of 2 trains.
- Platform return (STR)- 19 trains.
- PASS through -16 trains
- IOH & repair of coaches in sick line.
- Operation of mechanized Laundry.
- Maintenance of Weigh Bridge at MGG.

b) OBHS facility in train:

The following IND based trains are provided with OBHS facility:

- T.No. 12919/20(DADN-SVDK), 19313/14 & 19321/22 (IND-PATNA),
- T.No. 22911/12(IND-HWH),19301/02 (DADN-YPR),
- T.No. 19325/26(IND-ASR),19307/08(IND-CDG), 22941/42(IND-JAT),
- T.No. 22944/43(IND-PUNE),19312/13(IND-PUNE),19329/30(IND-UDZ)
- T.No. 19332/31(IND-KCVL),19333/34(IND-BKN)19336/35(IND-GIMB),
- T.No. 19337/38(IND-DEE),19305/06(IND-KYQ),19320/19(IND-VRL),
- T.No. 19315/16(IND-LPI),19317/18(IND-PURI)

ii) Infrastructure (IND):

- Sick line covered shed -108x16.5mtrs.
- Washing pit line -05 (24 Coaches length)
-01 (09 Coaches length)
- EOT Crane -02 sets 10/3 T capacity
- Mechanized Laundry -01 T Capacity
- Electric Air compressor -350cfm
- Diesel Air compressor -250cfm
- H.P.Jet machine -04Nos.
- Synchronized Jack -15 T 02 sets
- Utility vehicle -01 Nos.

B) COACH CARE COMPLEX, DADN (BG & MG)

The railway station DADN, a meter gauge line, was founded in the 1876s as part of the Holkar State Railway. DADN was connected to Indore and Khandwa by Metre Gauge railway lines on 03.08.1876 and 01.01.1878 respectively.

The work of Broad Gauge Track between DADN-IND was completed in 2016 and the services are currently active. After 13.01.2017, DADN is known as DR. AMBEDKAR NAGAR (DADN).

Coach Care Complex DADN is a repair and maintenance unit for MG and BG Railway coaches under the control of SR CDO INDORE.

Activity:

The number of coaches primarily based at this depot is 299 (51 ICF, 155 LHB, 59 DEMU and 34 MG) coaches. 07 Nos. departmental coaches of ARTs and ARMEs of DADN and Inspection Carriages of RTM division are taken care under Preventive Maintenance Schedules at this depot. Depot has the sanctioned strength of 173 Technical and 04 Clerical staff (C&W Department).

a) Coaching depot DADN undertake:

- Primary maintenance - 07 trains[SF-02,M/Ex-02,DEMU-01,MG-2]
- STR - 09 trains [M/Ex-4 Pass-01, DEMU-2, MG-2]
- Platform Return - 03 trains [DEMU- 03]
- Maintenance of Inspection carriage-01 No.
- "IOH" Schedule and repair of coaches in sick line.

ii) Infrastructure:

- BG Sick Line Covered Shed - 140x25mtrs
- MG Sick Line Covered Shed - 65x16mtrs
- Washing cum pit line - 02 BG coaches (24 Coaches length)
- 01 MG coaches (14 Coaches length)
- Fork lift - 02Nos(03 T Capacity)
- Eot crane -20/5 TON Capacity
- Electric Hoist - 01(05 T Capacity)
- Vacuum Exhauster - 01 Nos.
- Synchronized Jack set - 2(Each 20 Tone Cap.)
- Electric arc Welding Machine - 03 Nos.
- HP.Jet Plant - 01Nos.
- Air compressor - 4(350cfm)

-----***-----

5. WAGON ACTIVITIES

• Wagon repair depot Down Yard-RTM

• Wagon Depot SMP

Wagon depot Down yard-RTM and wagon depot SMP are engaged in repair and maintenance of BG goods stock on RTM division.

RTM Division has important private sidings like BCW Chanderiya, Adiyta Cement SMP, Vikram Cement JWO, JK Cement NBH, Wonder Cement GRF, Hindustan zinc Ltd CNA. The goods stock maintained at SMP Yard is utilized by operating department for transportation of commodity to and from these sidings as well as outside the division as per traffic requirement. Also mechanical department on RTM division is nodal agency for maintenance of fire extinguisher.

A) Wagon Depot Down Yard RTM:

Activity: Wagon depot Down Yard is one of the oldest wagon depot with sanction cadre of 45 posts.

- CC examination of BTCS rake, BTPN(water spl).
- Intensive examination of departmental stock.
- Repair of wagons in sick line .
- Maintenance and upkeep of ART/ARME based at RTM.
- Deployment of staff on RTM station at Platform to detect unusual/unsafe wagons in up goods trains.
- Fabrication of necessary spare parts of locking arrangement of BCNHL Wagons for Wagon depot SMP.

Infrastructure:

- Sick line covered shed - 45x19Mtr
- Yard Examination line - 02 nos. with pathway
- EOT Crane - 15/5 T
- KHOSALA Diesel Air Compressor - 01 Nos
- Elect. Air Compressor - 01 set
- Combined shearing, punching, Gapping and notching machine - 01 No.
- Fork Lift Truck - 03T Cap.
- Radial Drill Machine - 01 No.

B) Wagon Depot SMP:

Activity: Wagon Depot SMP is situated on RTM –COR BG section of RTM division. Wagon depot SMP is the only wagon depot to handle the work of rake examination to fulfill the requirement of private sidings in COR area. Wagon depot SMP is first on Western Railway to start Close Circuit Examination of newly designed BCNHL wagons.

These rakes are named as "PADMINI". The average holding of BCNHL close circuit rakes based at SMP varies between 30 to 70. The sanctioned cadre of wagon depot is 241.

Work undertake at wagon depot SMP:

- ROH Activities.
- Close Circuit Examination of BCHNHL rakes
- Premium examination of BCNHL & other air brake stock.
- Intensive examination of Air brake wagons.
- Repair of wagons in examination yard.
- Repair of wagons in sick line.
- Maintenance of Weigh Bridge at SMP.

Infrastructure (SMP):

- Sick line Covered Shed - 38x18Mtr
- ROH Covered Shed - 100x 52 Mtr
- Yard Examination lines - 02Nos. for CC & Premium
, intensive examination
- Pathway on examination line - Available
- EOT Crane - 3 nos (15/5 T)
- EOT CRANE CAP- 02(10/3 TON)
- DIESEL HYDRAULIC ROAD MOBILE CRANE-1(10 T)
- BG CNC SURFACE WHEEL LEATHE MACHINE-1 Nos
- CENTRE LATHE MACHINE-01
- SHEARING MACHINE-01
- Huck Bolting Machine-02
- TROLLEY MOUNTED HYDRAULIC MOUNTING AND
DISMOUNTING MACHINE-02(100 TONS PUSH 70 TON
PULL)
- MAHINDRA TRACTOR-01(39 HP)
- TRACTOR TROLLY-2 Nos
- PILLAR DRILL MACHINE-01 Nos
- Fork lift Truck - 2Nos(3 T Cap.)
- Diesel Generator set - 01
- Diesel Air Compressor - 04 Nos.
- Air Plasma Cutting machine - 02 Sets
- MIGMAG welding machine - 02 Sets
- WELDING MACHINE DC TYPE-04
- ELECTRIC ARC WELDING TRANSFORMAR-4(25kva)
- ELECTRIC ARC WELDING MACHINE (AIR COOLED)-1(400 AMP)
- SYNCHRONID DIESEL OPERATED HYDRAULIC JACKS-1 set(25 TON)
- JAMALPUR JACK -1 set(25 TON)

6. OTHER C&W UNITS

A) Coaching Depot-RTM (BG):

i) Activity:

Coaching depot situated on Delhi-Mumbai Rajdhani Route. Situation of depot become very important as it is the only C&W depot between KTT and BRC with Sanctioned cadre of 194 for coaching activities.

a) Coaching depot RTM undertake:

- Platform return (STR) trains- 8 Nos.
- En-route platform attention through passing trains - 79 pairs of trains.
- Maintenance of inspection carriage-01No.
- Repair of coaches in sick line.

ii) Infrastructure (RTM PY/Yd.):

- Covered shed for sick line and ART.
- Washing cum pit line-02Nos (10 coaches length)
- H.P.Jet Plant-02Nos.
- Air compressor-350cfm CCTV camera.
- Quick watering facility at PF no 4,5,6 & 7.

B) C&W Unit-COR:

- COR is important point for C&W examination of trains at platform. The sanctioned cadre for C&W activity at COR is 71 (68 fitting staffs&3 ministerial staffs) at C&W unit COR.
- En-route platform attention through passing trains-38 pairs of trains
- Attending Two Special trains namely POW & ROW.
- Maintenance of Weigh Bridge located at CNA.
- Maintenance and manning of ART/ARME based at COR.

C) C&W Unit UJN:

UJN is an important station where C&W staff is deployed for following activities:

- Maintenance and manning of ART/ARME based at UJN.
- Round the clock trouble shooting gang at platform.
- Watering of 14 trains.
- Attending cleaning of 03 platforms return trains.
- Divisional Training Centre UJN is run by C&W supervisors of UJN.
- Tower wagon fitness, line calls.

D) C&W Unit DHD:

- Tool van equipped with HRE is deployed at DHD to attend the unusual cases for immediate relief.
- Platform return (STR) -02 train.
- En-route platform attention through passing trains-24 pairs of trains
- C&W unit DHD has a sanctioned cadre of 13 posts.
- DHD tool van and staff have so many times proved their utility by providing quick response by attending unusual and ensured safe and punctual running of trains.

7. C&W TRAINING CENTRE UJJAIN

- Courses conducted
- Infrastructure
- Model available

Training:

Training is a tool to improve the efficiency and to gain higher productivity. On RTM division C&W training centre UJN is run by supervisors of C&W unit UJN.

The vision and mission of C&W training centre is to educate and update the knowledge of C&W staff for safe running of coaches and wagons.

A) Course conducted:

- 7 days refresher course for C&W Technicians.
- 7 days refresher course for C&W Khalasis.
- Special Course- As per Program given in training of Apprentice JE, Apprentice ALP and Traffic staff.
- Initial course- One week course on fresh appointment.
- Pre selection course - Training staff belong to SC/ST for promotion/selection to higher grades as ordered time to time.

B) Infrastructure:

- One Class room of seating capacity 16.
- One Model Room.
- One covered shed for model.
- Hostel with 4 Rooms (16 beds) .
- Library having 26 manuals and technical books.

C) Models Available:

- Resetting of alarm chain signal on Air brake system.
- Connections to connect FP to BP and vice-versa for single pipe working.
- ICF Bogie BMBC.
- Different parts of ICF Bogie.
- Model of Air Bk. System.
- Cut off Angle Cock BP & FP
- BMBC for wagons.
- Model of SAB.
- Model of BG Draw & Buffing gear.
- Model of Empty load Device.
- Wheel sets with various defects.
- Spring sets for CASNUB Bogie.
- CBC Screw coupling & Transition coupling parts.
- Adopters Narrow Jaw/Wide Jaw.
- All type of Brake Blocks.
- Tank Wagons AUDCO Valve.
- Model of SAB testing bench

8. Accident Relief Equipment and Medical Van

Sr	Location	SPART/ARME		ART			Beat
		Scale	Composition	Class	Crane	HRE	Jurisdiction invKM
1.	RTM(BG)	I	SPART (03 coaches)	A	140T (Diesel) modified GOTT W ALD	MFD	SPART: RTM-GDA=185 RTM-NAD=4 RTM-MDS=84 RTM-FTD – IND- DADN=141 ART: RTM-BRC=259 RTM-CNA=201 RTM-NAD-BPL=280 RTM-MDS=84 RTM-FTD=80 RTM-FTD- IND- DADN=141 MKC-DWX-INDB=74
2.	UJN(BG)	I	ARME (Medical Van & Auxiliary Tool van)	B	-	LUKAS	ART&ARME: NAD-UJN= UJN-BPL=185 DWX- MKC=36 UJN-IND-DADN=101 FTD-IND=40
3.	COR(BG)	I	ARME (Medical Van & Auxiliary Tool van)	B	-	BEMC O	ART&ARME: COR-CNA=8 COR-MDS=105
4.	DADN(MG)	I	ARME (Medical Van & Auxiliary Tool van)	B	-	MFD	ART&ARME : DADN- SWD
5.	DHD(BG) Tool van	Not provided		C	-	LUKAS	MGN-GDA

9. WEIGH BRIDGES

Three weigh bridges of Railway are installed in RTM division. The mechanical department bears the responsibility of its maintenance and ensures uninterrupted working.

Sr.	Location	Make	Date of Commissioning
1.	MGG	Shank Process India Pvt. Ltd.	29.04.2007
2.	CNA	Rice Lake Weighing system India Ltd.	20.03.2007
3.	SMP	Digital Weighing system Pvt. Ltd.	26.06.2012

10. EnHM WING:-

- ❖ Ratlam 'A' category Station has been taken over from Commercial Department by EnHM wing from 17.09.2017.
- ❖ Indore Railway Station has been started and taken under the controlled of EnHM wing w.e.f. 07.12.18.

11. CREW LOBBIES

Crew Lobby COR is under mechanical department on RTM Division.

Crew Lobby COR:

- Crew lobby COR is a BG integrated crew lobby.
- Classification of lobby is "A" Class.
- Lobby looked after by one chief crew controller and 04 crew controllers.
- Established as crew friendly lobby.
- CMS facility is available with 03 KOISK, 02Monitor, 02 Printers and 01 UPS of 6.5KVA.
- Lobby is provided with CCTV camera for monitoring of Sign on/Off activity, Breath analyzer test of LPs etc.
- Air conditioned ambience.
- Breathalyzer equipments are available.

12. Running Room COR

On RTM Division Running Room COR is under Mechanical Department. The Running Room COR is utilized by train crew of HQ AJMER, UDAIPUR, KOTA & RATLAM. Running Room COR has awarded with shield for "Best maintained Running Room" on W.R. for year 2013-14,2018-19.

(A) Basic Facility:

- 19 nos. of rooms.
- 74 beds capacity with individual locker facility.
- Facility of subsidized meal.
- Managed on contractual basis.
- Computerized reception counter.
- Standby power arrangement is available.
- Good quality fresh linen is provided to each occupant.
- Facility of mosquito net /repellent in available.
- Kitchen with good quality stainless steel utensils.
- Separate Veg & Non-veg kitchen.
- Well furnished dining hall.
- Provision of Fly catcher in dining hall.
- Meditation Room.

(B) Special Features:

- Nicely maintained garden with Lawn area.
- Provision of water fountain with lighting arrangement in lawn area.
- Provision of Garden Umbrella with chairs.
- 11 Nos. of CCTV are installed in Running Room.
- Washing machine with drier.
- Electronic Iron with ironing board.
- Facility of massage chair.
- Kitchens have facility of Mixture Grinder, Refrigerator, Microwave Oven, Electronic Chimney, Electric Fly Catcher.
- Facility of hand drier and music system in Dining hall.
- Availability of Aqua-guard with Water cooler.
- Solar Water heater plant with standby arrangement of 03 electric geysers.
- Shoe polishing machine.
- Facility of cloth drying stainless stands.
- Recreation room with Carom Board & Chess Board.
- Well maintained reading room with facility of Magazines and Daily News Papers.

13. RAILWAY CONSUMER DEPOT (RCD)

□

A) RCD-RTM

- Commission : 27.02.1981
- Location : Pass. Yard, Near PL.7

Facilities:

- Capacity : 270KL (3x70) Horizontal (Above ground)
- Daily Issue : 53 KL (Through Flow meters)
- Decanting Point : By Road=01. By Rail=03
- Fuelling point : UP side=23 ,Middle-4, DN side=16

Safety-Provision for firefighting:

- 1) Fire extinguisher (DCP 10 Nos 10Kg + 01 No-75Kg.+ Co2 01 No.05Kg)
- 2) Sand bucket
- 3) Sand pit
- 4) Fire bell
- 5) Hooter(Manually)
 - Fire fighting training: All staffs Trained.
 - Display board : Tel. No. Fire brigade, Police, RPF, Civil/Rly Hospital & all concern officers, supervisors
 - Road approach : Available

B) RCD-UJN

- Location: Platform No.8, Left side RTM end.

Facilities:

- Capacity : 350KL (5x70)Horizontal (Above ground)
- Received : By Road from Mangliya Gaon, Indore
- Issue : Through Flow meters
- Decanting: By Road=02. By Rail=10
- Fuelling point : UP side06, DN side06, DEMU02,
- MG02(Only Dn side working)

Safety-Provision for firefighting

- 1) Fire extinguisher (DCP 05 Nos 10Kg, 01 No. 50Kg.)
- 2) Sand bucket
- 3) Hooter (Electrical)
- Fire fighting training : Training given to all staff
- Phone No. display board : Fire brigade, Police control, RPF control, Civil/Rly. Hospital, other concern officer & supervisor.
- Road approach : Available

C) RCD-COR

- Name : RCD -COR
- Commission : 10.07.1983
- Location : Near PF 5

Facilities

- Capacity : 505KL ,(4x70)Horizontal (Above ground) +
- (1x225)Vertical
- Received : By Road from COR
- Issue : Through Flow meters
- Decanting: By Road=02.
- Fuelling point : UP side=06 ,DN side=07

Safety-Provision for firefighting

- Fire extinguisher (04 Nos-DCP 10, 04Kg + 4.5Kg Co2 type-01., 75 KG- 04 No)
- Sand bucket
- Sand pit
- Fire bell
- Fire fighting training : Training given to all staff
- Phone No. display board : Fire brigade, Police control, RPF control,
Civil/Rly Hospital, other concern officers & supervisors.
- Road approach : Available

D) RCD-DADN

- Name : RCD -DADN
- Commission : 28.11.1992
- Location : Near C&W Depot

Facilities

- Capacity : 280KL (4x70)Horizontal (Above ground)
- Received : By Road from Mangliya Gaon, Indore
- Issue : Through Flow meters
- Decanting: By Road=02.
- Fuelling point :
- DEMU 02, MG02 (Only Dn side working)

Safety-Provision for firefighting

- 1) Fire extinguisher (50Kg -1 No., 4.5 Kg Co2 – 01 No., 10 Kg. -02 Nos., 5 Kg. – 6 Nos.)
- 2) Sand bucket
- 3) Hooter (Electrical)
- Fire fighting training : Training given to all staff
- Phone No. display board : Fire brigade, Police control, RPF control,
- Civil/Rly. Hospital & other concern officer
- Road approach : Available.
