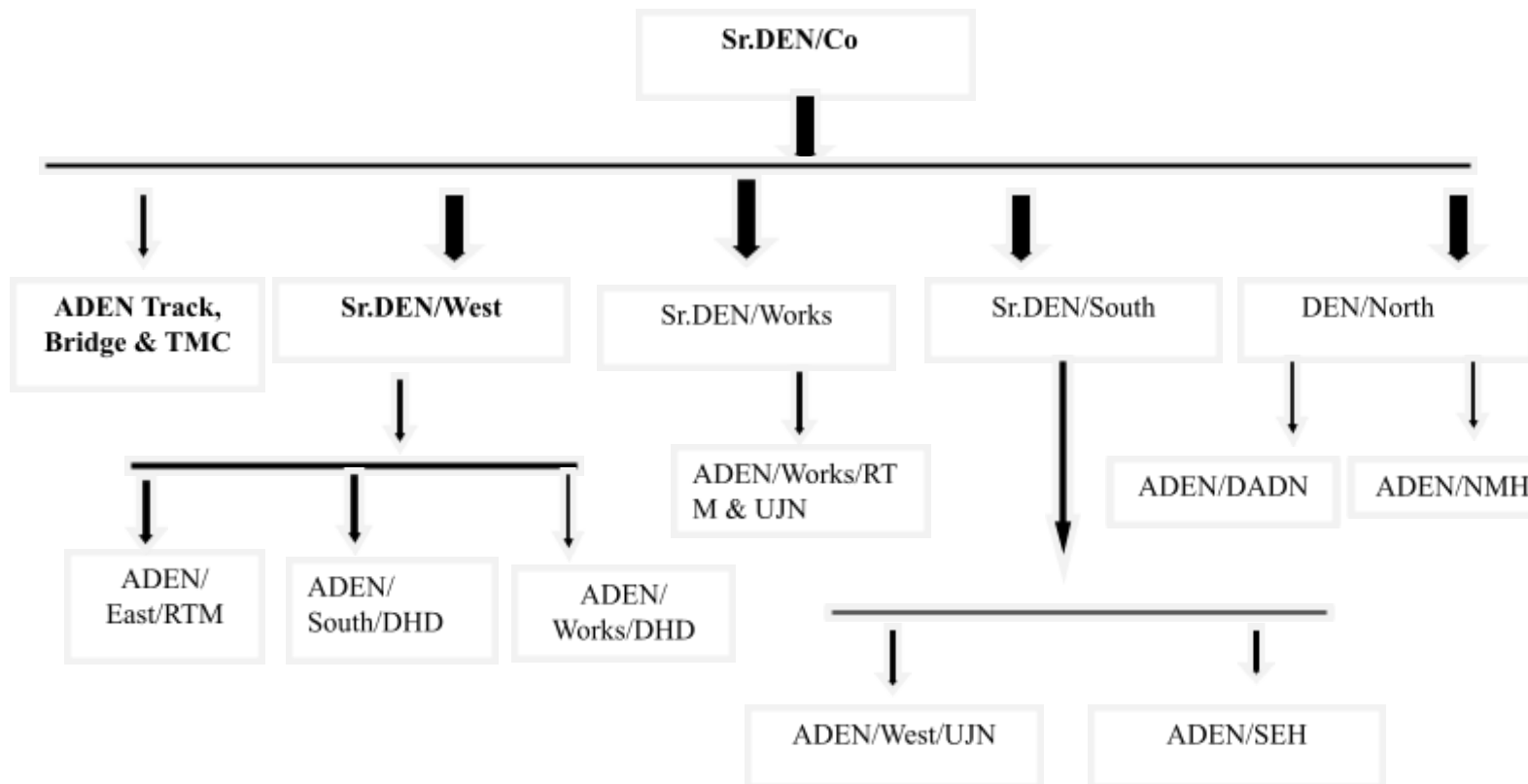


Engineering Department-RTM Div, Western Railway

(Divisional Railway Manager's Office, Near Do Batti, Ratlam 457001)

[E-Mail: srdenhqrtm@gmail.com.](mailto:srdenhqrtm@gmail.com)

Engineering Department Organization Chart



ENGINEERING DEPARTMENT

The department of Engineering acts as a catalyst for improving Safety in the Indian Railways at divisional level. The prime objective of the Engineering department is Maintaining all fixed assets of the Indian Railways, such as tracks, bridges, buildings, roads, water supply, and land and designing, constructing, and operating railway systems, networks, and transport systems. Railway engineering work includes construction, maintenance, logistics, and operations. .

At Division level, Engineering organization is headed by Senior Divisional Engineer (Co), who directly reports to PCE/CCG, Sr.DEN/Co is assisted by branch officers.

Sub section		Information Sought	Remarks
4(1)(b)	(i)	The particulars of its organization, functions and duties.	Engineering Department organization Chart as above.
4(1)(b)	(ii)	The powers and duties of officers and employees.	<u>Duties of Engineering Officers :</u> Responsible for maintaining tracks, station buildings, colonies, service buildings, water supply, roads, tender calling, finalization, and execution of civil engineering works as per Indian Railway Engineering code. <u>Duties of Engineering Staff:</u> All members of the Engineering staff must make themselves thoroughly conversant with the relevant rules and regulations laid down in the various manual, such as Establishment, Engineering, Accident manual, G&SR, Operating, IRPWM, IRWM and other manuals, books and circulars issued from time to time by the railway administration for the performance of the respective duties.
4(1)(b)	(iii)	The procedure followed in the decision making process, including channels of supervision and accountability.	The procedure/norms set for discharge of function are as per the provisions contained in IRPWM, IRBM & IRWM.
4(1)(b)	(iv)	The norms set by it for the discharge of its functions.	The general procedural instructions are also reiterated / issued from time to time

4(1)(b)	(v)	The rules, regulations, instructions, manuals and records, held by it or under its control or used by its employees for the discharge of its functions.	As detailed in IRPWM, IRBM & IRWM , https://indianrailways.gov.in/railwayboard/uploads/directorate/prd/PR/IRPWM2020.pdf https://www.ircen.gov.in/ircen/Works_Manuals/IRWM%20CS%20UPTO%2010.pdf https://indianrailways.gov.in/railwayboard/view_section.jsp?lang=0&id=0,1,304,366,526,1592																					
4(1)(b)	(vi)	A statement of the categories of the documents that are held by it or under its control.	The policy and guidelines issued by the Railway Board, HQ office and Divisional office through various circulars /instructions.																					
4(1)(b)	(vii)	The particulars of any arrangements that exists for consultation with, or representation by the members of the public in relation to the formulation of its policy or implementation thereof.	There is no specific provision of consultation with, or representation by the members of the public in relation to the formulation of its policy or implementation thereof.																					
4(1)(b)	(viii)	A statement of the boards, councils, committees and other bodies consisting of two or more persons constituted as its part or for the purpose of its advice, and as to whether meetings of those boards, councils, committees and other bodies are open to the public, or the minutes of such meeting are accessible for public.	No such provision for any Board councils committee and other bodies consisting of two or more persons constituted as its part or for the purpose of its advice, and as to whether meetings of those boards, councils, committees and other bodies are open to the public, or the minutes of such.																					
4(1)(b)	(ix)	A directory of its officers and employees.	Engineering Department directory attached here with.																					
4(1)(b)	(x)	The monthly remuneration received by each of its officers and employees, including the system of compensation as provided in its regulations.	<div>It is decided by Ministry of finance and Ministry of Railway Which is dealt by account department. The officers/staff are in the following pay scale:</div> <table><tr><th>S N</th><th>Designation</th><th>Scale and Grade Pay</th></tr><tr><td>1</td><td>Sr. DEN</td><td>Rs. 15,600 – 39,100 + GP Rs.7,600/-</td></tr><tr><td>2</td><td>DEN</td><td>Rs. 15,600 – 39,100 + GP Rs. 6,600</td></tr><tr><td>3.</td><td>ADEN</td><td>Rs. 15,600 – 39,100 + GP Rs. 5400</td></tr><tr><td>4</td><td>SSE,CLA,CHOS</td><td>Rs 9300-34800 + GP Rs. 4600/4800</td></tr><tr><td>5</td><td>JE, OS</td><td>Rs 9300-34800 + GP Rs. 4200</td></tr><tr><td>6</td><td>Sr.Clerk</td><td>Rs 5200-20200 + GP Rs. 2800</td></tr></table>	S N	Designation	Scale and Grade Pay	1	Sr. DEN	Rs. 15,600 – 39,100 + GP Rs.7,600/-	2	DEN	Rs. 15,600 – 39,100 + GP Rs. 6,600	3.	ADEN	Rs. 15,600 – 39,100 + GP Rs. 5400	4	SSE,CLA,CHOS	Rs 9300-34800 + GP Rs. 4600/4800	5	JE, OS	Rs 9300-34800 + GP Rs. 4200	6	Sr.Clerk	Rs 5200-20200 + GP Rs. 2800
S N	Designation	Scale and Grade Pay																						
1	Sr. DEN	Rs. 15,600 – 39,100 + GP Rs.7,600/-																						
2	DEN	Rs. 15,600 – 39,100 + GP Rs. 6,600																						
3.	ADEN	Rs. 15,600 – 39,100 + GP Rs. 5400																						
4	SSE,CLA,CHOS	Rs 9300-34800 + GP Rs. 4600/4800																						
5	JE, OS	Rs 9300-34800 + GP Rs. 4200																						
6	Sr.Clerk	Rs 5200-20200 + GP Rs. 2800																						

			7	Jr.Clerk	Rs 5200-20200 + GP Rs. 1900
			8	TM/khalasi	Rs 5200-20200 + GP Rs. 1800
4(1)(b)	(xi)	The budget allocated to each of its agency, indicating the particulars of all plans, proposed expenditures and reports on Disbursements made.	It is dealt by Account department.		
4(1)(b)	(xii)	The manner of execution of subsidy programs, including the amounts allocated and the details of beneficiaries of such programs.	Not pertains to Engineering department.		
4(1)(b)	(xiii)	Particulars of recipients of concessions, permits or authorizations granted by it.	Engineering department does not grant any type of concessions, permits or authorizations.		
4(1)(b)	(xiv)	The details in respect of the information, available to or held by it, reduced in an electronic form.	No such information, available to or held by it, reduced in an electronic form.		
4(1)(b)	(xv)	The particulars of facilities available to Citizens for obtaining information, including working hours of a library or reading room, if maintained for public use.	Engineering Department does not have any facilities available to Citizens for obtaining information, including working hours of a library or reading room.		
4(1)(b)	(xvi)	The names, designations and other particulars of the Public Information officers.	<p align="center">Public Information Officer Shri. Mahendra Singh Jatav (Division Engineer (North) Ratlam) Divisional Railway Manager's Office, Ratlam 457001</p> <p align="center">Appellate Authority Shri Ashfaq Ahmed Additional Divisional Railway Manager –RTM Divisional Railway Manager's Office, Ratlam 457001</p>		
4(1)(b)	(xvii)	Such other information as may be prescribed; and thereafter update these publications every year.	Information is available on site https://indianrailways.gov.in/ https://wr.indianrailways.gov.in		
4(1)(b)	(xviii)	Incumbency position in department of revenue.	Not applicable to Engineering department		

Designation	Station	Mobile no.
Sr.DEN/Co.	RTM	9752492200
Sr.DEN/West	RTM	9752492201
Sr.DEN/ North	RTM	9752492203
DEN/ South	RTM	9752492202
DEN / Works	RTM	9752492204
ADEN/ Track	RTM	9752492205
ADEN/ East	RTM	9752492210
ADEN/Works	RTM	9752492211
XEN/ TMC	RTM	9752492212
ADEN/ Bridge	RTM	9752492214
ADEN/Works	UJN	9752492213
ADEN(RSW)	RTM	9752492217
ADEN/ West	UJN	9752492220
ADEN SEH	SEH	9752492216
ADEN/Works	DHD	9724092218
ADEN/ South	DHD	9724092219
ADEN	MHW	9752492215
ADEN	NMH	9752492221
CLA	RTM	9752492242
SSE/PW	PPD	9724096236
SSE/PW	DHD	9724096246
SSE/PW	DHD	9724096214
SSE/PW	MGN	9752492284
SSE/PW	RTM	9752492228
SSE/RT	RTM	9752492287
SSE/PW	RTM	9752492286
SSE/PW	RTM	9752496109
SSE/PW	RTM	9752492289
SSE/PW	RTM	9752496107
SSE/W	RTM	9752496084
SSE/PW	NAD	9752496130
SSE/PW	UJN	9752496064
SSE/PW	UJN	9752496104

SSE/PW	MKC	9752496122
SSE/RT	UJN	9752496060
SSE/PW	UJN	9752496115
SSE/PW	BCH	9752496128
SSE/PW	SJP	9752496161
SSE/PW	SEH	9752496201
SSE/PW	NMH	9752496121
SSE/PW	JAO	9752492245
SSE/PW	BNG	9752496082
SSE/PW	DADN	9752496145
SSE/PW	KNW	9752496134
SSE/PW	NAD	9752496070
SSE/W		9724096255
SSE/W	DHD	9724096262
SSE/W-III	DHD	9724096267
SSE/W-I	RTM	9752492290
SSE/W	RTM	9752496007
SSE/W	NAD	9752496056
SSE/W	UJN	9752496012
SSE/W	UJN	9752496006
SSE/W	UJN	9752496294
SSE/W	SJP	9752496057
SSE/W	SEH	9752496015
SSE/W	COR	9001192296
SSE/W	NMH	9752496146
SSE/W	NMH	9752496155
SSE/W	IND	9752496190
SSE/W	IND	9752493991
SSE/W	LMNR	9752496092
SSE/W	DADN	9752496091
SSE/Br.	RTM	9752496034
SSE/Br.	RTM	9752496093
SSE/Br.	UJN	9752496184
SSE/TMC	RTM	9752496024
TMC/Control	RTM	9752496021
Engg./Control	RTM	9752492206