

## SIGNAL AND TELECOM DEPARTMENT

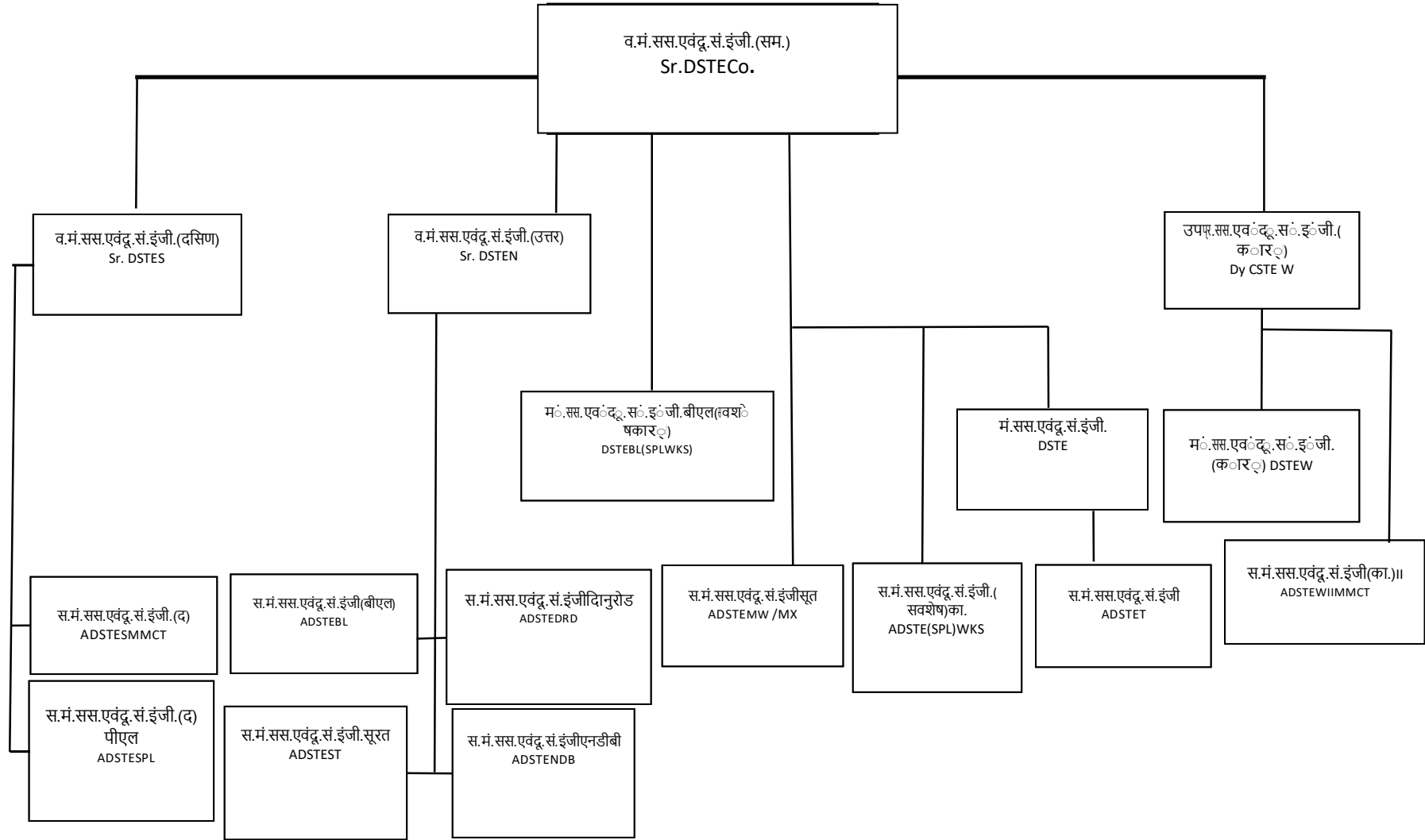
### INFORMATION IN REFERENCE TO SECTION 4(b) OF RTI ACT 2005

Sub Section	Information sought	Remarks
4(b) i	The particulars of the organization functions and duties	Organization chart is attached as <b>Annexure-'I'</b> S &T department is responsible for creation and maintenance of the Signal & Telecom assets of the Division.
4(b) ii	The power of duties of Officer and employee	The schedule of power for Officers for Execution of different work are as per SOP Chapter 2 (Section -1, 2 & 3 etc.) For supervisor as per Chapter -3 (Section-1,2,3,4,5 &6 of IRSEM) Click here <a href="https://indianrailways.gov.in/railwayboard/view_section.jsp?lang=0&amp;id=0,1,304,366,544,664">https://indianrailways.gov.in/railwayboard/view_section.jsp?lang=0&amp;id=0,1,304,366,544,664</a>
4(b) iii	The procedure followed in the decision making process including channels of supervision	The general procedural instructions followed as per policy circulars. The procedure/norms set for discharges of function are as per Railway Board, Zonal & Divisional office letter /circulars issued from time to time. <a href="#">Click here for Rly Board's site for codes &amp; Manuals</a>
4(b) iv	The norms set by it for the discharge of its function	
4(b) v	The rules regulations, instructions, manuals and records held by it or under its control or used by its employees	A number of rules, regulations, instructions, codes, manuals, Act etc have already been published by Railway board, Zonal, Divisional Railway from time to time <a href="#">Click here for Rly. Board's site</a>
4(b) vi	A statement of the categories of the documents which are held by it or under its control	The Railway Board Policy Circulars and Important letters.  <a href="#">Click here for Rly. Board's site</a>  <a href="#">Signal Directorate</a>  <a href="#">Telecom Directorate</a>
4(b) vii	The particulars of any arrangement that exists for the consultation with or the representation by the member of public in relation to the formulation of its policy or the implementation thereof	No specific consultant existing for S&T department.  The public interference is covered by Commercial.

4(b) viii	A statement of the boards, councils, committees and other bodies consisting of two or more persons constituted as its part or for the purpose of its advice and for the meeting of these boards, councils, committees and other bodies are open to the public or the minute of such meeting are accessible for public.	Not Applicable.
4(b) ix	A directory of the officers and employees.	Attached as <b>Annexure – ‘II’</b>
4(b) x	The monthly remuneration received by each of the officers and employees, including the system of compensation as provided in its regulations	Pertains to Accounts & Personnel Department.
4(b) xi	Indicating the budget allocation to all plans, details of all plans, proposed expenditure and report on disbursements made.	<a href="#">Click for Pink Book</a>
4(b) xii	The manner of the execution of subsidy programs including the amount allocation and the details of beneficiaries of such programs	Does not pertain to S&T Department.
4(b) xiii	Particulars of concessions, permits or authorization obtained by the authority.	Does not pertain to S&T Department.
4(b) xiv	The details in respect of the information, available to or held by it, reduced in an electronic form	Information relating to organization, its evolution, budget speech, budget highlights, tourist facilities, passenger information, train information, availability of accommodation, status of tickets, internet booking of tickets, a number of codes/manuals, etc. have already been made available on Western Railway website. <a href="http://www.wr.indianrailways.gov.in">www.wr.indianrailways.gov.in</a>
4(b) xv	A description of the facilities available to citizens for obtaining information including the working hours of a library or reading room maintained for public use.	All issues related to information of Railway Passenger are dealt by commercial department.

4(b) xvi	Name, designation and other particulars of public information Officer (PIO)	<p><b><u>Public Information Office</u></b></p> <p>Shri Ashish Tiwari Sr.DSTE/Co./MMCT Contact : 44800 &amp; 9004499800 E-mail Id- srdstecommct@gmail.com</p> <p><b><u>Appellate Authority</u></b></p> <p>Shri Sheel Bhadra ADRM/INFRA- II Contact : 44544 &amp; 9004499003 E-mail Id-adrmnsmctwr@gmail.com</p>
4(b) xvii	Such other information as may be prescribed and thereafter update these publication every years.	<p>Information related to Tenders, press related, Important News etc as are available on <a href="http://www.wr.indianrailway.gov.in">www.wr.indianrailway.gov.in</a></p>

# संगठन चार्ट ORGANIZATION CHART



## Annexure-II

DIRECTORY OF S&T DEPARTMENT		
Sl.No.	Designation	CUG No.
1	Sr.DSTE/CO/MMCT	9004499800
2	SR.DSTE/N/MMCT	9004499801
3	Sr. DSTE/S/MMCT	9004498800
4	DY.CSTE/W/MMCT	9004499802
5	DSTE/MMCT	9004499803
6	DSTE/BL	9724099803
7	DSTE/W/MMCT	9004499804
8	ADSTE/T/MMCT	9004499808
9	ADSTE/W-I/MMCT	9004499807
10	ADSTE/W-II/MMCT	9004499805
11	ADSTE/SPLWORK/MMCT	9004498803
12	ADSTE/PL	9004499810
13	ADSTE/S	9004498809
14	ADSTE/BL	9724099802
15	ADSTE/ST	9724099804
16	ADSTE/NDB	9004471805
17	SSE/SIG/SUB	9004499843
18	SSE/SIG/NON-SUB	9004473960
19	SSE/SIG/MX	9004492415
20	SSE/SIG/ROC	9004473988
21	SSE/SIG/STORE/PL	9004499849
22	SSE/SIG/AWS/PL	7977987415
23	SSE/SIG/REPAIR/UNIT/PL	9004499819
24	SSE/SIG/ADH	9004499819
25	SSE/SIG/BVI	9004499881
26	SSE/SIG/BYR	9004499854
27	SSE/SIG/DRD	9004471851
28	SSE/SIG/BL	9724099810
29	SSE/SIG/STORE/BL	9724099894
30	SSE/SIG/ST	9004471854
31	SSE/SIG/VYA	9724099891
32	SSE/SIG/NDB	9004471812
33	SSE/SIG/STORE/NDB	9004471812
34	SSE/TELE/HQ	9004498857
35	SSE/TELE/NON-SUB	9004498882
36	SSE/TELE/CUG	9004498853
37	SSE/TELE/AUTO/CCG	9004498834
38	SSE/TELE/CO/MMCT	9004498864
39	SSE/TELE/WIRELESS/MMCT	9004498881
40	SSE/TELE/STORE/MMCT	9004498874
41	SSE/TELE/AUTO/MMCT	9004498894
42	SSE/TELE/NOCC& UCC/MMCT	9004498870
43	SSE/TELE/TMS & MTRC/MMCT	9004498861
44	SSE/TELE/CO/ADH	9004498866
45	SSE/TELE/CO/BVI	9004441833
46	SSE/TELE/M/ BL	9724099883
47	SSE/TELE/CABLE/BVI	9004498839