

Western Railway
Electrical(P) Department of Vadodara Division
Information under section 4(1)(b) of Right to Information Act, 2005

Section	Information to be enclosed	Remarks
4(1)(b)(i)	The particular of its organization, functions and duties.	<p>Sr.DEE/P/BRC is the head of the Electrical Department of Ahmedabad Division. The Electrical Department is responsible for the....</p> <ol style="list-style-type: none"> 1. Power Supply Distribution System. 2. Electrification & wiring of Installation. 3. Maintenance of GS Equipment 4. Lighting Design and Illumination. 5. Air-Condition & Ventilation. 6. Lift & escalators. 7. Green Building Concepts & Certification. 8. Renewable Energy System. 9. Energy Conservation & Energy Efficiency. 10. Tariff and Metering. 11. Testing of Electrical Installation & Eiq. 12. Protection of Electrical Systems. 13. Electrical fire System. 14. I E Regulations 15. Safety Procedures 16. Scada in General Service. 17. Train lightning and Air conditioning of Coaches <p>See Sr.DEE/P/BRC details at bottom of the page.</p>
4(1)(b)(ii)	The powers and duties of its officer and employees.	The Electrical Department functions like Overall management and coordination of all activities pertaining to Electrical (Power & Coaching) Department, units, Monitoring installation, maintenance smooth functioning of vital assets and equipment's under Electrical dept., Coordination with Divisional Head quarter for smooth functioning of field units, Trade test activities, Test checking of contractual works , monitoring on Power supply, Power Car Operation, AC-Coaches maintenance. &AC failure, Passenger Complaint,
4(1)(b)(iii)	The procedure followed in the decision making process including channels of supervision and accountability.	As per policy, guidelines, circulars, codes, manuals, sop etc issued by Railway Board, Zonal Division from time to time.
4(1)(b)(iv)	The norms set by it for the discharge of its functions.	As per policy, guidelines, circulars, codes, manuals, sop etc issued by Railway Board, Zonal Division from time to time.
4(1)(b)(v)	The rules, regulations, instructions, manuals and records held by it or	As per policy, guidelines, circulars, codes, manuals, SOP etc issued by Railway Board,

	under its control or used by its employees for discharging its functions.	Zonal Division from time to time.
4(1)(b)(vi)	A statement of the categories of documents that are held by it or under its control.	As per policy, Establishment circulars, codes, manuals.
4(1)(b)(vii)	The particular of any arrangement that exists for consultation with or representation by, the member of public in relation to the formulation of its policy or implementation thereof.	As per Railway board's guideline, it is dealt by Commercial department.
4(1)(b)(viii)	A statement of the boards, councils, committees and other bodies consisting of two or more persons constituted as its part or whether meeting of those boards, councils, committees and other bodies are open to the public, or the minutes of such meeting are accessible for public.	As per Railway board's guideline, it is dealt by Commercial department.
4(1)(b)(ix)	Directory of its Officers and Employees	Click here for telephone numbers.
4(1)(b)(x)	A monthly remuneration received by each of its officers and employees, including the system of compensation as provided in its regulations.	As per Railway board's guideline, it is dealt by Accounts and Personal department.
4(1)(b)(xi)	The budget allocated to each of its agency, indicating the particulars of all plans, proposed expenditures and reports on disbursements made	As per Railway board's guideline, it is dealt by Accounts department.
4(1)(b)(xii)	The manner of execution of subsidy programmes, including the amounts allocated and the details of beneficiaries of such programmes .	As per Railway board's guideline, it is dealt by Personal department.
4(1)(b)(xiii)	Particulars of recipients of concessions, permits or authorizations granted by it.	As per Railway board's guideline, it is dealt by Commercial department.
4(1)(b)(xiv)	Details in respect of the information available to or held by it reduced in an electronic form.	Information available on Website. https://wr.indianrailways.gov.in/index.jsp?lang=0
4(1)(b)(xv)	The particular of facilities available to citizens for obtaining information, including the working hours of a library or reading room, if maintained for public use.	
4(1)(b)(xvi)	The name, designation and other particulars of the public information officer.	Public Information Officer Shri Shiv Dayal Sr.Divisional Electrical Engineer(Power)- Vadodara Mo: 9724091300 Vadodara
4(1)(b)(xvii)	Such other information as may be prescribed and	Information related to Tender , Press related , Important News etc. as are available on Western Railway Website.

**Electrical (P) Department
Vadodara Division
Western Railway**



**DEPARTMENTAL
BROCHURE**

ELECTRICAL (POWER)

ORGANIZATION

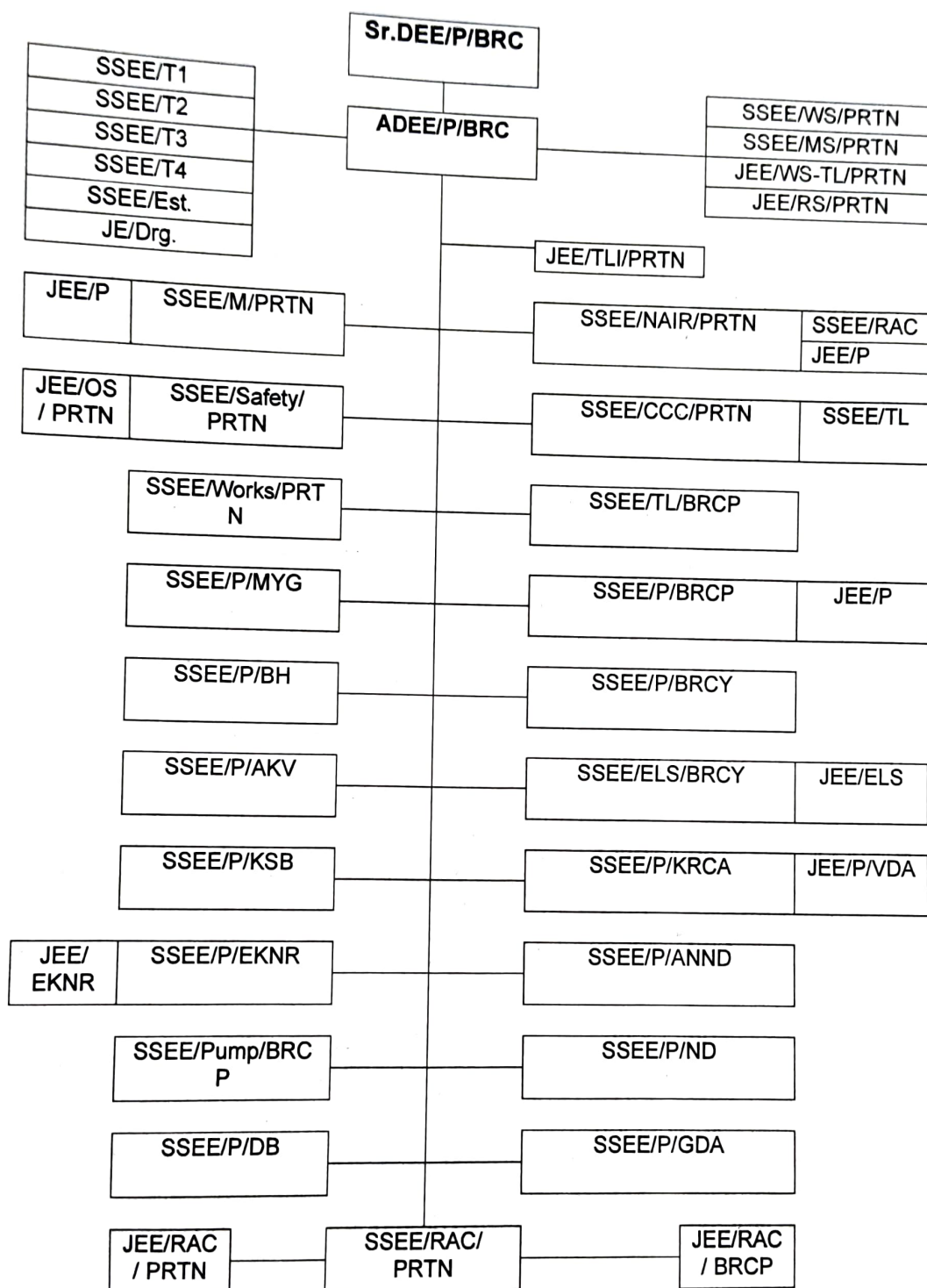
Sr.DEE/P/BRC

Senior Divisional Electrical Engineer (Power) is the in-charge of the department. He is assisted by Assistant Divisional Electrical Engineer. Sr.DEE (P) BRC is responsible for maintenance and operation of all Power installations, Train lighting and Air -Conditioning assets on BRC division and NAIR including technical assistance/ guidance for maintaining Electrical installations provided in PRTN Work Shop. The responsibility also includes maintenance of electrical portion of coaching assets at Coach Care Centre, Pratapnagar.

1. Staff Cadre Position

CATEGORY	POWER			TL & RAC			TOTAL		
	Sanc.	On Roll	Vac.	Sanc.	On Roll	Vac.	Sanc.	On Roll	Vac.
Supervisors	42	31	11	0	7	(-7)	42	38	4
Artisan	218	172	46	123	108	15	341	280	61
Unskilled	150	45	105	62	49	13	212	94	118
Total	410	248	162	185	164	21	595	412	183

2. ORGANISATION CHART



3. ASSETS / ACTIVITIES

Sr. No.	ASSETS	HOLDING (Nos.)
1	Total connected load	26122 KW (Div-22612 + NAIR- 3510)
2	Av. Monthly consumption	11,64,858 units (Div + NAIR) during 2022-23
3	Av. Monthly energy bill	Rs.90,68,421.00 (Div + NAIR) during 2022-23
4	Av. energy purchase rate	Rs.7.79
5	HT Supply points	11
6	LT Supply points	756
7	Total No. of HT Sub Station	15
8	Total No. of Electrified stations (BG + NG)	117 (113+4)
9	Electric pump sets	241 nos.
10	Refrigerators	81
11	Air conditioners & Package Units	993 (941 + 52)
12	Water coolers	188 nos.
13	Solar based Water cooler	15 nos.
13	Transformers	36
14	DG sets	44
15	Electrified Quarters	4732
16	Individual Segregated Quarters	All qtrs. are segregated
17	Electrified L.C. Gates	A. BG section: 296 Nos. B. NG section: 36 Nos.
18	Solar electrified L.C Gates	16
19	Earthing	4743
20	Solar Water Heater	23
21	Lifts	29
22	Escalators	12
23a)	Primary Maintenance Rakes (BG+NG)	13 + 02
23b)	Secondary Maintenance Rakes (BG+NG)	1+0
24a)	Primary Maintenance Coaches (BG+NG)	137 (TL-101 & AC- 36) + 2 (NG)
24b)	Secondary Maintenance Coaches (BG+NG)	19 (TL-10 & AC-9)
25	High Masts in Station/Goods sheds /yards	62
26	UPS	152
27	Total No of Outsider connection -	254
	Avg. monthly billed units. -	1385866 Units
	Avg. monthly billing rate -	@ Rs. 10.26/unit for Gov. dept. @ Rs. 10.84/unit for private parties.

4. DETAILS OF COACHING MAINTENANCE AT BRC DIVISION

1) PRIMARY MAINTENANCE OF TRAINS AT VARIOUS BG DEPOTS

Depot	Train No.	No. of rake	No. of TL coaches	No. of AC coaches/Pantry Car/Power Car
CCC/ PRTN	20903/04	1	12 LHB	10 LHB
	20905/06	1	12 LHB	10 LHB
	20945/46	1	12 LHB	10 LHB
	22930/29	1	20 ICF	0
	09495/96	1	12 ICF	0
	09163/64/69/70	2	16 ICF	0
	09119/20	1	12 ICF	0
	09409/10	1	0	4 ICF
	Total	09	96 (36 LHB+60 ICF)	34 (30 LHB + 4 ICF)
BRC	ART ICF	1	4 ICF	0
	091004 ICF	1	1 ICF	0
	NAIR-1 ICF	1	0	1 ICF
	NAIR-2 ICF	1	0	1 ICF
	Total	04	05 ICF	2 ICF
	Grand total	13	101 (36 LHB + 65 ICF)	36 (30 LHB + 6 ICF)

2) SECONDARY MAINTENANCE OF TRAINS AT VARIOUS BG DEPOTS

Depot	Train No.	No. of rake	No. of TL coaches	No. of AC coaches/Pantry Car/Power Car
CCC/PRTN	20920/53	1	10 LHB	9 LHB
	Total	1	10 LHB	9 LHB

3) TERMINAL EXAMINATION (BG)

Depot	Rake	Train Nos.	Total Coaches	Remarks
BRC	2	19819/20 KTT-BRC PARCEL	22 ICF	11 TL + 11 TL
BRC	1	22929/22930 BRC-DRD BHILAD EXP	20 ICF	20 TL
BRC	1	09496/09495 BRC-ADI SANKALP EXP	12 ICF	12 TL
BRC	1	19036/19035 ADI-BRC INTERCITY	23 ICF	20 TL + 03 AC
BRC	1	22959/22960 JAM-BRC INTERCITY	22 LHB	19 TL + 03 AC
BRC	1	12929/12930 BL-BRC INTERCITY	22 LHB	19 TL + 03 AC
BRC	1	09161/09162 BL-BRC PASSENGER	18 ICF	18 TL
EKNR	2	20945/46 KDCY-NZM	44 LHB	24 TL + 20 AC
EKNR	1	20920/19 KDCY-MAS	18 LHB	09 TL + 09 AC
EKNR	2	12927/12928 Vadodara EXP	44 LHB	24 TL + 20 AC
EKNR	1	20949/50 ADI-KDCY-ADI	10 LHB	6 TL + 4 AC
EKNR	1	20903/20904 KDCY - BSB	22 LHB	12 TL + 10 AC
EKNR	1	20905/20906 KDCY - REWA	22 LHB	12 TL + 10 AC
EKNR	1	09409/10 Heritage	4 ICF	4 AC
PRTN	1	09119/20 PRTN -ARPR	12 ICF	12 TL
PRTN	2	09163/64/69/70 PRTN -CTD-ARPR	16 ICF	8 TL + 8 TL
Total	16	204 LHB + 127 ICF	331	245 TL + 86 AC

4) PRIMARY MAINTENANCE OF TRAINS AT VARIOUS NG DEPOTS

DEPOT	Train No.	No. of Rakes	No. of Coaches	Coaches daily Maint.
PRTN	RB-700 & RA 7	02	02	02

DETAILS OF SOLAR PANELS OVER BRC DIVISION

A. Solar panels already commissioned through Departmental :

S. N	Station	Location	Capacity (KWp)	DOC	Remarks
1	OD	Stn bldg	1.1	02.01.2013	
2	MPR	Stn bldg	1.16	22.10.2013	
3	VRM	Stn bldg	1.16	30.08.2013	
4	BRCP	RTM R/Room	3	15.02.2014	
5	PRTN	NAIR Cybrary building	10	29.04.2016	
6	SNA	Stn bldg	5	19.12.2019	
7	CYI	Stn bldg	18	08.11.2020	
8	PRTN	WS-CTRB building	60	05.01.2022	
9	DK	Stn bldg	13	02.03.2022	
10	SVL	Stn bldg	10	15.12.2022	
11	BAJ	Stn bldg	4.5	02.01.2023	
12	UMH	Stn bldg	4.5	02.01.2023	
13	AGCI	Stn bldg	3.5	02.01.2023	
14	EKNR	Elect Substation & parking area	100	20.04.2023	
15	PRTN	Auditorium roof	12	25.04.2023	
16	KSB	RPF barrak	10	29.05.2023	
17	DB	Stn Building	18	01.08.2023	
18	PAVI	Stn Building	5	18.07.2023	
19	BRCY	Memu Shed	30	21.08.2023	
20	BDE	Stn Building	15	05.09.2023	
Total			325		

B. Solar panels already commissioned through PPP mode :

Sr. No.	Station	Location	Capacity (KWp)	DOC	Remarks
1	PRTN WS	Admin building, Locker room & Paint shop shed	174.72	09.09.2019	
2	PRTN	Div office	98.28	08.09.2019	
3	PRTN	Div Hospital	60.48	08.09.2019	
4	GDA	Stn building & PF1 cover shed	100.3	14.09.2019	
5	PRTN	NAIR - Pahune hostel-15.04, Mess-44.73, Manthan-19.84, Sports complex-20.16	99.77	12.02.2020	
Total			533		
G. TOTAL			858 KWp		

NATURAL WATER COOLER (Solar)

S.N	Station	Location	No.
1	ANND	PF 4	1
2	ND	EI Building	1
3	PRTN	Coach Care Centre	1
4	MHD	EI Building	1
5	KRCA	ROH SHED	1
6	BJW	PF 1	1
7	BRCY	MEMU SHED	1
8	BRCY	ELS/BRCY	1
9	BRCY	SSE/SIG 2 office	1
10	PRTN	SSEE/Mains/PRTN office	1
11	PRTN	Nr. OPD/PRTN HOSPITAL	1
12	VDA	PF 1	1
13	PRTN	WS – SSEE/POWER OFFICE	1
14	KIM	PF 1	1
15	BH	PF 1	1

DETAILS OF LIFTS INSTALLED OVER BRC DIVISION

S N	Station	Location	No.	Make (M/s)
1	BRCP	Circulating Area (O/s of parcel office)	1	M/s Johnson Lift Pvt. Ltd
2	BRCP	Concourse hall	1	M/s OTIS Elevator
3	NAIR	Pahune Hostel	1	M/s LT Elevators, Kolkata
4	NAIR	Pahune Hostel	1	M/s Omega elevator
5	NAIR	Atithi Hostel	1	M/s Omega elevator
6	NAIR	Manthan academic	1	M/s Johnson Lift Pvt. Ltd
7	NAIR	Atithi Hostel	1	M/s Johnson Lift Pvt. Ltd
8	PRTN	Hospital	1	M/s Kinetic elevator/ ADI
9	PRTN	Division office/ Control buldg	1	M/s Metro Elevator
10	ANND	PF 1	1	M/s Johnson Lift Pvt. Ltd
11	ANND	PF 2/3	1	M/s Johnson Lift Pvt. Ltd
12	ANND	PF 4	1	M/s Johnson Lift Pvt. Ltd
13	ND	Station west side entrance	1	M/s Johnson Lift Pvt. Ltd
14	ND	PF 1	1	M/s Metro Elevator
15	ND	PF 2/3	1	M/s Metro Elevator
16	AKV	PF 1	1	M/s Johnson Lift Pvt. Ltd
17	AKV	PF 2/3	1	M/s Johnson Lift Pvt. Ltd
18	AKV	PF 4	1	M/s Johnson Lift Pvt. Ltd
19	ARPR	Concourse hall	1	M/s Johnson Lift Pvt. Ltd
20	ARPR	Concourse hall	1	M/s Johnson Lift Pvt. Ltd
21	CYI	PF 1	1	M/s Johnson Lift Pvt. Ltd
22	CYI	PF 2	1	M/s Johnson Lift Pvt. Ltd
23	KDCY	PF 2/3	1	M/s Johnson Lift Pvt. Ltd
24	KDCY	Station building	1	M/s Johnson Lift Pvt. Ltd
25	KSB	PF 1	1	M/s Metro Elevator
26	KSB	PF 2	1	M/s Metro Elevator
27	KSB	DFCCIL siding end	1	M/s Metro Elevator
28	GDA	PF 1	1	M/s Metro Elevator
29	GDA	PF 2/3	1	M/s Metro Elevator

DETAILS OF ESCALATORS INSTALLED OVER BRC DIVISION

S N	Station	Location	No.	Make (M/s)
1	BRCP	PF 1	2 (Up & Dn)	M/s Johnson Lift Pvt. Ltd
2	BRCP	C A east side ADI end	1 (Up)	M/s Johnson Lift Pvt. Ltd
3	BRCP	C A east side ADI end	1 (Dn)	M/s Johnson Lift Pvt. Ltd
4	KDCY	PF 2/3 BRC end	1 (Up)	M/s Johnson Lift Pvt. Ltd
5	KDCY	PF 2/3 KDCY end	1 (Dn)	M/s Johnson Lift Pvt. Ltd
6	KDCY	Stn Buildg A wing Ground to 1st floor	1 (Up)	M/s Johnson Lift Pvt. Ltd
7	KDCY	Stn Buildg A wing 1st to 11nd floor	1 (Up)	M/s Johnson Lift Pvt. Ltd
8	KDCY	Stn Buildg B wing 11nd to 1st floor	1 (Dn)	M/s Johnson Lift Pvt. Ltd
9	KDCY	Stn Buildg B wing 1st to Ground floor	1 (Dn)	M/s Johnson Lift Pvt. Ltd
10	BRCP	PF 6	1 (Up)	M/s Johnson Lift Pvt. Ltd
11	BRCP	PF 6	1 (Dn)	M/s Johnson Lift Pvt. Ltd
		Total	12	

HT & LT SUPPLY POINTS:

S. N	Low Tension Supply points	No.
1	HT point (11 KV)	11
2	LT supply points (1 & 3 phase)	626
3	Street light points (LT)	68
4	Common points (LT)	62
	TOTAL	767

DETAILS OF AIR CONDITIONING UNITS OVER BRC DIVISION

A. BRC Division:

S.N	Type of AC units	No. of AC units	Total Capacity (Tonnage)	Remarks
1	Division	653	1080 T	
2	Package type	29	456.75 T	
	Total	682 Nos.	1536.75 T	

B. NAIR / PRTN:

S.N	Type of AC units	No. of AC units	Total Capacity (Tonnage)	Remarks
1	Split & Window	402		
2	Package type	23	323.5 T	
3	VRF type	18	46 T	
	Total	443 Nos.	2691 T	

DETAILS OF WATER COOLERS PROVIDED OVER BRC DIVISION

S.N	Div / NAIR	No. of Water Coolers	Remarks
1	Division	178 Nos.	
2	NAIR / PRTN	06 Nos.	
	Total	184 Nos.	

DETAILS OF PUMPS PROVIDED OVER BRC DIVISION

S.N	Div / NAIR	No. of Pumps	Remarks
1	Division	205 Nos.	
2	NAIR / PRTN	36 Nos.	
	Total	241 s.	

USE OF RENEWABLE ENERGY RESOURCES (SOLAR)

Sr. No.	Year	Solar generation	Variation
1	2020-21	2,58,278	-
2	2021-22	2,91,197	+ 32,919
3	2022-23	4,06,157	+ 1,14,960
4	2023-24 (up to Jan)	5,40,237	+ 1,34,080

DETAILS OF SPECIFIC ENERGY CONSUMPTION

AVG SEC	Year 2022-23			Year 2023-24			% variation in SEC
	Connected load (KW)	KWH	SEC	Connected load (KW)	KWH	SEC	
	23272	8172584	45.74	26220	9363699	43.12	

Saving of HSD oil due to HOG of Power cars-

Yearly	Consumption in KL				Saving in KL				Saving in Rupees (Cr)			
	2020-21	2021-22	2022-23	2023-24 (April-Jan)	2020-21	2021-22	2022-23	2023-24 (April-Jan)	2020-21	2021-22	2022-23	2023-24 (April-Jan)
	2.165	19.435	19.100	17.115	93.9	567.984	593.511	553.74	0.55	3.75	4.58	5.89

750 V LHB-EOG rake testing arrangement at 1 no. pit line CCC/PRTN depo in BRC division. Presently maintenance work of 04 trains (20903/04,20905/06,20945/46,20920/53) is done at CCC/PRTN depo. This will save approx.. 91.12 L HSD oil and save RS 9719/- per day (APRIL-23 TO JAN-24).

BRC Division - Electrical Department (Power/TL/AC/RAC)
Mobile Phone No. Directory - 2024

Sr.No.	Name	Designation & Station	CUG/Mob. No.	Auto	Duty room
1	Shri D.P. Soni	Sr.DEE/P/BRC	9724091300	44300	
2	Shri Arbind Kumar	ADEE/P/BRC	9724091304	44306	
3	Shri Sudhir Kumar	CA/Sr.DEE/P/BRC	7043028983	44315	
4	Shri Naeem Khan	SSEE/T1/PRTN	9724091371	44321	
5	Shri Sushil Borwankar	SSEE/T2/PRTN	9724091120	44321	
6	Shri Raman K Samyal	SSEE/T3/PRTN	9724091364	44321	
7	Shri Ajay kumar Sinha	SSEE/T4/PRTN	9724091123	44358	
8	Shri Manas Ranjan Tripathi	SSEE/T5/PRTN	9724091387	44358	
9	Shri Rakesh Agarwal	SSEE/P/NAIR/PRTN	9724091383	45286	
10	Shri Rajendra Singh Chauhan	SSEE/Mains/PRTN	9724091382	44317	
11	Shri Thakorbhai M. Gohil	SSEE/Mains/PRTN	9724091388	44317	
12	Shri M. S. Kazi	SSEE/Works/PRTN	9724091377	44375	
13	Shri M. Meghrajani	SSEE/RAC/PRTN	9724091366	44323	
14	Shri Divyang Master	SSEE/CCC/PRTN	9724091125	44367	
15	Shri Anjal Soni	SSEE/CCC/PRTN	9724091360	44367	
16	Shri Amit C. Mehta	SSEE/RS/WS/PRTN	9724091381	44337	
17	Shri Yogesh Pareta	SSEE/Motor/WS/PRTN	9724091375	44324	
18	Shri Lalit Kumar Rathiya	SSEE/RAC/NAIR	9724091126	45243	
19	Shri Kapil Parmar	SSEE/P/DB	9724091378	49112	
20	Shri Durgesh Pansary	SSEE/P/EKNR	9724091384		
21	Shri Rajubhai V. Mevada	SSEE/P/BH	9724091372	41330	41331
22	Shri H.K Meena	SSEE/P/MYG	9724091368		
23	Shri Samuel Robertson	SSEE/PUMP/BRCP	9724091373	43316	
24	Shri Ashwin kumar Bhalodia	SSEE/P/BRCP	9724091376	43314	43322
25	Shri Ajay Marathe	SSEE/TL/BRCP	9724091385	43317	
26	Shri Hasamukh Vankar	SSEE/P/KRCA	9724344928	47230	
27	Shri Jayant Kumar N. Sharma	SSEE/P/ANAND	9724091389	48230	48233
28	Shri Jayanti D. Parmar	SSEE/P/ND	9724091363	43771	
29	Shri Patel Chetan Mohanbhai	SSEE/P/GDA	9724091129	42323	42332
30	Shri Dinesh Waghela	SSEE/P/BRCY	9724091385	46709	46706
31	Shri Nasir Shaikh	SSEE/ELS/BRCY	9724091365		
32	Shri Kishor Bijotkar	JEE/P/NAIR	9724091380	45286	
33	Shri Lokesh Meena	JEE/P/VDA	9724091127		
34	Shri Narendra Parmar	JEE/P/BRCP	9724091386		
35	Shri Alpesh Rathwa	JEE/P/EKNR	9724091367		
36	Shri Boduram G	JEE/Mains/PRTN	9724091379		
37	Shri Deena Meena	JEE/RAC/BRCP	9724091128		
38	Shri Sanjay P. Upadhyay	JEE/P/AKV	9724040675	41512	
39	Shri Pradip I Prajaptati	JEE/OS/PRTN	9724040676		
40	Shri Vipul Pandya	JE/Civil/Drawing	9724031263	44321	
41	Ku. Rekhaben Gohel	JEE/CTLI/PRTN	9724091370	44364	44322
42	Shri Nitesh Parmar	JEE/KSB	9724091369		
43	Shri Vishal Parekh	TCN-II/PRTN	7043028989		
44	Ku. Koyana Raya	Khalasi	7043028992	44317	
Ministerial Staff					
1	Shri G. F. Valvi	Chos/WA	7043030796	44316	
2	Shri Kaushik Sutaria	Chos/Store	7043030762	44361	
3	Shri Ashish Maharaja	OS/W6	7043030778	44314	
4	Shri Ashok Vaghela	OS/W6	7043030768	44314	
5	Shri Chirag Parmar	Jr.Clerk/W6	7043030785	44314	
6	Shri Suresh Raut	OS/Store	7043030752	44361	
7	Shri Alpesh N. Katariya	Sr.Clerk/WA	7043030757	44316	
8	Shri Mahesh Parmar	OS/WA	7043030766	44316	
9	Shri Amit Tadvi	Jr.Clerk/WA	7043030767	44316	
10	Shri Ashok Meena	Jr.Clerk/WA	7043030771	44316	
11	Shri Vipul Hadiya	Jr.Clerk/Store	7043030789	44361	
12	Shri Manilal Saiba	Gen. Asst.	7573831781		
13	Shri Jaydeep K. Parmar	Gen. Asst.	7043035810		